

Datasheet for ABIN1944776

**anti-TCL1A antibody (AA 32-66)**[2 Images](#)[3 Publications](#)[Go to Product page](#)

## Overview

Quantity:	400 µL
Target:	TCL1A
Binding Specificity:	AA 32-66
Reactivity:	Human
Host:	Rabbit
Clonality:	Polyclonal
Conjugate:	This TCL1A antibody is un-conjugated
Application:	Western Blotting (WB), Flow Cytometry (FACS)

## Product Details

Immunogen:	This TCL1A antibody is generated from a rabbit immunized with a KLH conjugated synthetic peptide between 32-66 amino acids from the Central region of human TCL1A.
Clone:	RB48087
Isotype:	Ig Fraction
Purification:	This antibody is purified through a protein A column, followed by peptide affinity purification.

## Target Details

Target:	TCL1A
Alternative Name:	TCL1A ( <a href="#">TCL1A Products</a> )
Background:	Enhances the phosphorylation and activation of AKT1, AKT2 and AKT3. Promotes nuclear

## Target Details

	translocation of AKT1. Enhances cell proliferation, stabilizes mitochondrial membrane potential and promotes cell survival.
Molecular Weight:	13460
Gene ID:	8115
UniProt:	<a href="#">P56279</a>
Pathways:	<a href="#">Stem Cell Maintenance</a>

## Application Details

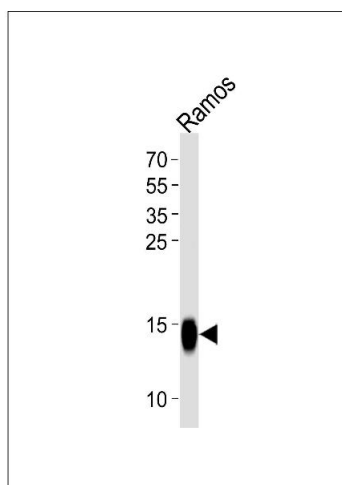
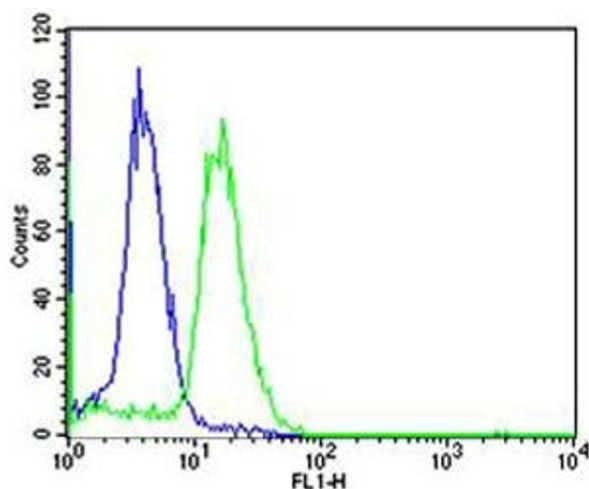
Application Notes:	WB: 1:1000. FC: 1:25
Restrictions:	For Research Use only

## Handling

Format:	Liquid
Buffer:	Purified polyclonal antibody supplied in PBS with 0.09 % (W/V) sodium azide.
Preservative:	Sodium azide
Precaution of Use:	This product contains Sodium azide: a POISONOUS AND HAZARDOUS SUBSTANCE which should be handled by trained staff only.
Storage:	4 °C,-20 °C
Expiry Date:	6 months

## Publications

Product cited in:	<p>McPherson, Baichwal, Weigel: "Identification of ERF-1 as a member of the AP2 transcription factor family." in: <b>Proceedings of the National Academy of Sciences of the United States of America</b>, Vol. 94, Issue 9, pp. 4342-7, (1997) (<a href="#">PubMed</a>).</p> <p>Williamson, Boshier, Skinner, Sheer, Williams, Hurst: "Chromosomal mapping of the human and mouse homologues of two new members of the AP-2 family of transcription factors." in: <b>Genomics</b>, Vol. 35, Issue 1, pp. 262-4, (1996) (<a href="#">PubMed</a>).</p>
-------------------	--



### Flow Cytometry

**Image 1.** Flow cytometric analysis of Ramos cells using TCL1A Antibody (Center)(green, Cat(ABIN1944776 and ABIN2838519)) compared to an isotype control of rabbit IgG(blue). (ABIN1944776 and ABIN2838519) was diluted at 1:25 dilution. An Alexa Fluor® 488 goat anti-rabbit IgG at 1:400 dilution was used as the secondary antibody.

### Western Blotting

**Image 2.** Western blot analysis of lysate from Ramos cell line, using TCL1A Antibody (Center) (ABIN1944776 and ABIN2838519). (ABIN1944776 and ABIN2838519) was diluted at 1:1000. A goat anti-rabbit IgG H&L(HRP) at 1:5000 dilution was used as the secondary antibody. Lysate at 35  $\mu$ g.