

Datasheet for ABIN1944805

anti-NCF1 antibody**3** Images**4** Publications[Go to Product page](#)

Overview

Quantity:	100 µg
Target:	NCF1
Reactivity:	Human
Host:	Rabbit
Clonality:	Polyclonal
Conjugate:	This NCF1 antibody is un-conjugated
Application:	Western Blotting (WB), Immunofluorescence (IF)

Product Details

Isotype:	IgG1
----------	------

Target Details

Target:	NCF1
Alternative Name:	p47 phox (NCF1 Products)
Background:	NCF2, NCF1, and a membrane bound cytochrome b558 are required for activation of the latent NADPH oxidase (necessary for superoxide production).
Molecular Weight:	44652 Da
Gene ID:	653361
UniProt:	P14598
Pathways:	PI3K-Akt Signaling

Application Details

Application Notes: IF: 1:100. WB: 1:250-1:1000. WB: 1:250-1:1000

Restrictions: For Research Use only

Handling

Format: Liquid

Buffer: Rabbit IgG in phosphate buffered saline (without Mg²⁺ and Ca²⁺), pH 7.4, 150mM NaCl, 0.02 % sodium azide and 50 % glycerol.

Preservative: Sodium azide

Precaution of Use: WARNING: Reagents contain sodium azide. Sodium azide is very toxic if ingested or inhaled. Avoid contact with skin, eyes, or clothing. Wear eye or face protection when handling. If skin or eye contact occurs, wash with copious amounts of water. If ingested or inhaled, contact a physician immediately. Sodium azide yields toxic hydrazoic acid under acidic conditions. Dilute azide-containing compounds in running water before discarding to avoid accumulation of potentially explosive deposits in lead or copper plumbing.

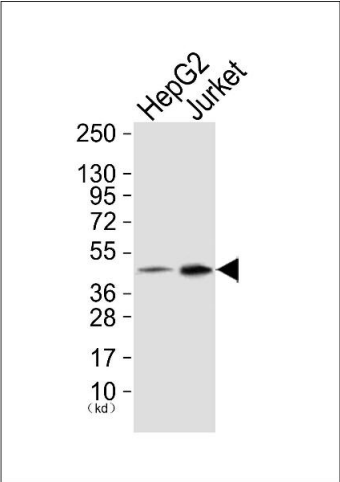
Storage: 4 °C, -20 °C

Publications

Product cited in: McPherson, Baichwal, Weigel: "Identification of ERF-1 as a member of the AP2 transcription factor family." in: **Proceedings of the National Academy of Sciences of the United States of America**, Vol. 94, Issue 9, pp. 4342-7, (1997) ([PubMed](#)).

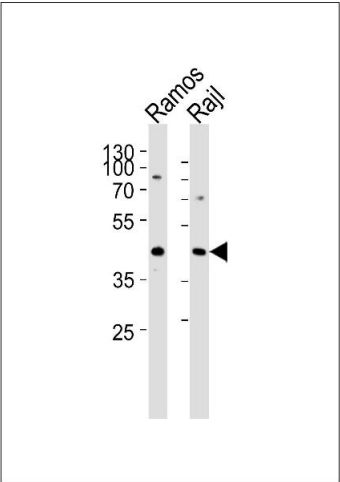
Williamson, Bosher, Skinner, Sheer, Williams, Hurst: "Chromosomal mapping of the human and mouse homologues of two new members of the AP-2 family of transcription factors." in:

Genomics, Vol. 35, Issue 1, pp. 262-4, (1996) ([PubMed](#)).



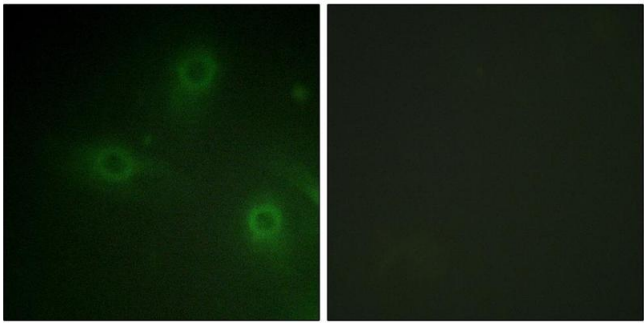
Western Blotting

Image 1. Western blot analysis of extracts from HepG2 cells (Lane 1) and Jurket cells (Lane 2), using Neutrophil Cytosol Factor 1 (Ab-304) Antibody. The lane on the left is treated with synthesized peptide.



Western Blotting

Image 2. Western blot analysis of lysates from Ramos,Raji cell line (from left to right),using p47 phox Antibody (Ab-304)(ABIN483362 and ABIN1532746). ABIN483362 and ABIN1532746 was diluted at 1:1000 at each lane. A goat anti-rabbit IgG H&L(HRP) at 1:5000 dilution was used as the secondary antibody.Lysates at 35 µg per lane.



Immunofluorescence

Image 3. Immunofluorescence analysis of HeLa cells, using Neutrophil Cytosol Factor 1 (Ab-304) antibody.