

Datasheet for ABIN1944825

anti-PHKG1 antibody[Go to Product page](#)**1** Image**2** Publications

Overview

Quantity:	100 µg
Target:	PHKG1
Reactivity:	Human
Host:	Rabbit
Clonality:	Polyclonal
Conjugate:	This PHKG1 antibody is un-conjugated
Application:	Western Blotting (WB)

Product Details

Isotype: IgG1

Target Details

Target:	PHKG1
Alternative Name:	PHKG1 (PHKG1 Products)
Background:	Catalytic subunit of the phosphorylase b kinase (PHK), which mediates the neural and hormonal regulation of glycogen breakdown (glycogenolysis) by phosphorylating and thereby activating glycogen phosphorylase. In vitro, phosphorylates PYGM, TNNI3, MAPT/TAU, GAP43 and NRGN/RC3 (By similarity).
Molecular Weight:	45024 Da
Gene ID:	5260
UniProt:	Q16816

Target Details

Pathways: [Cellular Glucan Metabolic Process](#)

Application Details

Application Notes: WB: 1:1000

Restrictions: For Research Use only

Handling

Format: Liquid

Buffer: Rabbit IgG in phosphate buffered saline (without Mg²⁺ and Ca²⁺), pH 7.4, 150mM NaCl, 0.02 % sodium azide and 50 % glycerol.

Preservative: Sodium azide

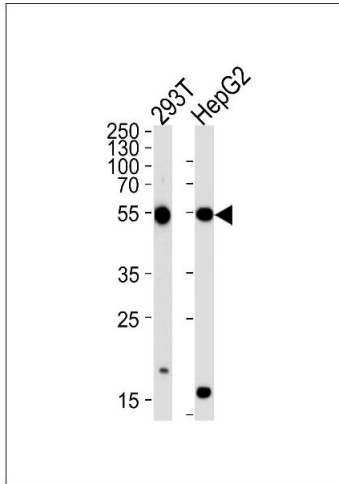
Precaution of Use: **WARNING:** Reagents contain sodium azide. Sodium azide is very toxic if ingested or inhaled. Avoid contact with skin, eyes, or clothing. Wear eye or face protection when handling. If skin or eye contact occurs, wash with copious amounts of water. If ingested or inhaled, contact a physician immediately. Sodium azide yields toxic hydrazoic acid under acidic conditions. Dilute azide-containing compounds in running water before discarding to avoid accumulation of potentially explosive deposits in lead or copper plumbing.

Storage: 4 °C, -20 °C

Publications

Product cited in: Hillier, Fulton, Fulton, Graves, Pepin, Wagner-McPherson, Layman, Maas, Jaeger, Walker, Wylie, Sekhon, Becker, OLaughlin, Schaller, Fewell, Delehaunty, Miner, Nash, Cordes, Du, Sun, Edwards et al.: "The DNA sequence of human chromosome 7. ..." in: **Nature**, Vol. 424, Issue 6945, pp. 157-64, (2003) ([PubMed](#)).

Wehner, Kilimann: "Human cDNA encoding the muscle isoform of the phosphorylase kinase gamma subunit (PHKG1)." in: **Human genetics**, Vol. 96, Issue 5, pp. 616-8, (1996) ([PubMed](#)).



Western Blotting

Image 1. Western blot analysis of lysates from 293T, HepG2 cell line (from left to right), using PHKG1 Antibody (ABIN1452096 and ABIN1452098). ABIN1452096 and ABIN1452098 was diluted at 1:1000 at each lane. A goat anti-rabbit IgG H&L (HRP) at 1:5000 dilution was used as the secondary antibody. Lysates at 35 μ g per lane.