



Datasheet for ABIN1944830

## anti-LSP1 antibody



[Go to Product page](#)

1 Image

3 Publications

### Overview

Quantity:	100 µg
Target:	LSP1
Reactivity:	Human
Host:	Rabbit
Clonality:	Polyclonal
Conjugate:	This LSP1 antibody is un-conjugated
Application:	Western Blotting (WB)

### Product Details

Isotype: IgG1

### Target Details

Target:	LSP1
Alternative Name:	LSP1 ( <a href="#">LSP1 Products</a> )
Background:	May play a role in mediating neutrophil activation and chemotaxis (By similarity).
Molecular Weight:	37192 Da
Gene ID:	4046
UniProt:	<a href="#">P33241</a>

## Application Details

---

Application Notes: WB: 1:1000

Restrictions: For Research Use only

## Handling

---

Format: Liquid

Buffer: Rabbit IgG in phosphate buffered saline (without Mg<sup>2+</sup> and Ca<sup>2+</sup>), pH 7.4, 150mM NaCl, 0.02 % sodium azide and 50 % glycerol.

Preservative: Sodium azide

Precaution of Use: **WARNING:** Reagents contain sodium azide. Sodium azide is very toxic if ingested or inhaled. Avoid contact with skin, eyes, or clothing. Wear eye or face protection when handling. If skin or eye contact occurs, wash with copious amounts of water. If ingested or inhaled, contact a physician immediately. Sodium azide yields toxic hydrazoic acid under acidic conditions. Dilute azide-containing compounds in running water before discarding to avoid accumulation of potentially explosive deposits in lead or copper plumbing.

Storage: 4 °C,-20 °C

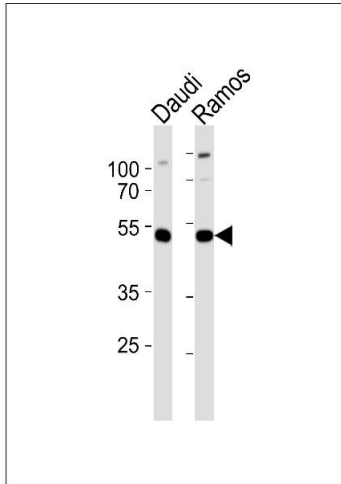
## Publications

---

Product cited in: Takeda, Kadowaki, Haga, Takaesu, Mitaku: "Identification of G protein-coupled receptor genes from the human genome sequence." in: **FEBS letters**, Vol. 520, Issue 1-3, pp. 97-101, (2002) ([PubMed](#)).

Communi, Gonzalez, Detheux, Brézillon, Lannoy, Parmentier, Boeynaems: "Identification of a novel human ADP receptor coupled to G(i)." in: **The Journal of biological chemistry**, Vol. 276, Issue 44, pp. 41479-85, (2001) ([PubMed](#)).

Wittenberger, Schaller, Hellebrand: "An expressed sequence tag (EST) data mining strategy succeeding in the discovery of new G-protein coupled receptors." in: **Journal of molecular biology**, Vol. 307, Issue 3, pp. 799-813, (2001) ([PubMed](#)).



### Western Blotting

**Image 1.** Western blot analysis of lysate from Daudi,Ramos cell line,using LSP1 Antibody (ABIN1451313 and ABIN1451315). ABIN1451313 and ABIN1451315 was diluted at 1:1000 at each lane. A goat anti-rabbit IgG H&L(HRP) at 1:5000 dilution was used as the secondary antibody.Lysate at 35 µg per lane.