

Datasheet for ABIN1945086

anti-ALDH1A1 antibody (AA 306-339)

4 Images

1 Publication

[Go to Product page](#)

Overview

| | |
|----------------------|---|
| Quantity: | 400 µL |
| Target: | ALDH1A1 |
| Binding Specificity: | AA 306-339 |
| Reactivity: | Human, Mouse, Rat |
| Host: | Rabbit |
| Clonality: | Polyclonal |
| Conjugate: | This ALDH1A1 antibody is un-conjugated |
| Application: | Western Blotting (WB), Immunofluorescence (IF), Immunohistochemistry (Paraffin-embedded Sections) (IHC (p)) |

Product Details

| | |
|-----------------------|--|
| Immunogen: | This ALDH1A1 antibody is generated from a rabbit immunized with a KLH conjugated synthetic peptide between 306-339 amino acids from the Central region of human ALDH1A1. |
| Clone: | RB48178 |
| Isotype: | Ig Fraction |
| Predicted Reactivity: | Pr |
| Purification: | This antibody is purified through a protein A column, followed by peptide affinity purification. |

Target Details

| | |
|---------|---------|
| Target: | ALDH1A1 |
|---------|---------|

Target Details

| | |
|-------------------|---|
| Alternative Name: | ALDH1A1 (ALDH1A1 Products) |
| Background: | Binds free retinal and cellular retinol-binding protein- bound retinal. Can convert/oxidize retinaldehyde to retinoic acid (By similarity). |
| Molecular Weight: | 54862 |
| Gene ID: | 216 |
| UniProt: | P00352 |
| Pathways: | Dopaminergic Neurogenesis |

Application Details

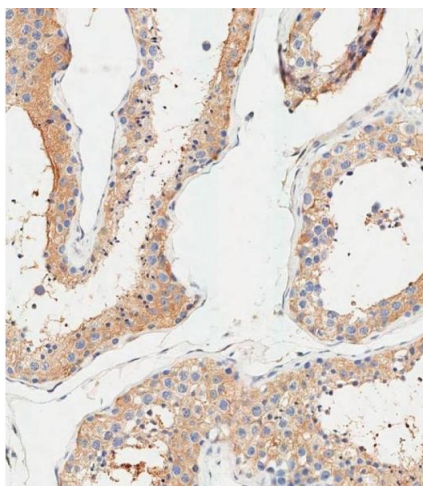
| | |
|--------------------|--|
| Application Notes: | IF: 1:25. WB: 1:1000. IHC-P-Leica: 1:500. IHC-P-Leica: 1:500 |
| Restrictions: | For Research Use only |

Handling

| | |
|--------------------|--|
| Format: | Liquid |
| Buffer: | Purified polyclonal antibody supplied in PBS with 0.09 % (W/V) sodium azide. |
| Preservative: | Sodium azide |
| Precaution of Use: | This product contains Sodium azide: a POISONOUS AND HAZARDOUS SUBSTANCE which should be handled by trained staff only. |
| Storage: | 4 °C, -20 °C |
| Expiry Date: | 6 months |

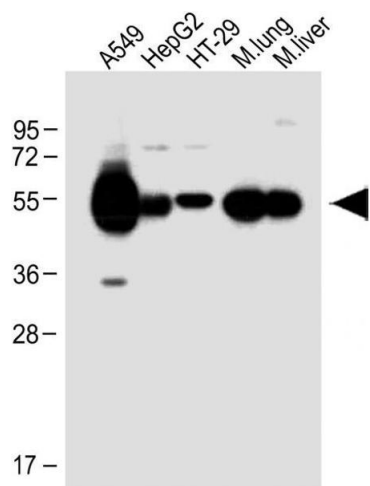
Publications

| | |
|-------------------|--|
| Product cited in: | <p>Li, Liu, Zhang, Ye, Qiao, Ling, Wu, Zhang, Yu: "Characterization of a novel human CDK5 splicing variant that inhibits Wnt/beta-catenin signaling." in: Molecular biology reports, Vol. 37, Issue 5, pp. 2415-21, (2010) (PubMed).</p> <p>Meyerson, Enders, Wu, Su, Gorka, Nelson, Harlow, Tsai: "A family of human cdc2-related protein kinases." in: The EMBO journal, Vol. 11, Issue 8, pp. 2909-17, (1992) (PubMed).</p> |
|-------------------|--|



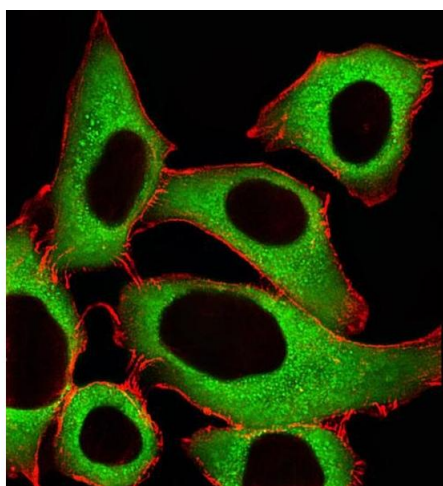
Immunohistochemistry (Paraffin-embedded Sections)

Image 1. Immunohistochemical analysis of paraffin-embedded Human testis tissue using (ABIN1945086 and ABIN2838551) performed on the Leica® BOND RXm. Tissue was fixed with formaldehyde at room temperature, antigen retrieval was by heat mediation with a EDTA buffer (pH 9.0). Samples were incubated with primary Antibody (1:500) for 1 hours at room temperature. A undiluted biotinylated CRF Anti-Polyvalent HRP Polymer antibody was used as the secondary antibody.



Western Blotting

Image 2. All lanes : Anti-ALDH1A1 Antibody (Center) at 1:1000 dilution Lane 1: A549 whole cell lysate Lane 2: HepG2 whole cell lysate Lane 3: HT-29 whole cell lysate Lane 4: Mouse lung lysate Lane 5: Mouse liver lysate Lysates/proteins at 20 µg per lane. Secondary Goat Anti-Rabbit IgG, (H+L), Peroxidase conjugated at 1/10000 dilution. Predicted band size : 55 kDa Blocking/Dilution buffer: 5 % NFDM/TBST.



Immunofluorescence

Image 3. Fluorescent image of A549 cells stained with ALDH1A1 Antibody (Center) (ABIN1945086 and ABIN2838551). (ABIN1945086 and ABIN2838551) was diluted at 1:25 dilution. An Alexa Fluor 488-conjugated goat anti-rabbit IgG at 1:400 dilution was used as the secondary antibody (green). Cytoplasmic actin was counterstained with Alexa Fluor® 555 conjugated with Phalloidin (red).

Please check the [product details page](#) for more images. Overall 4 images are available for ABIN1945086.