

Datasheet for ABIN1945097

anti-LIM Domain Binding 1 Protein antibody (C-Term)[Go to Product page](#)**1** Image**2** Publications

Overview

Quantity:	400 µL
Target:	LIM Domain Binding 1 Protein (LDB1)
Binding Specificity:	AA 336-368, C-Term
Reactivity:	Zebrafish (Danio rerio)
Host:	Rabbit
Clonality:	Polyclonal
Conjugate:	This LIM Domain Binding 1 Protein antibody is un-conjugated
Application:	Western Blotting (WB)

Product Details

Immunogen:	This DANRE Idb1a antibody is generated from a rabbit immunized with a KLH conjugated synthetic peptide between 336-368 amino acids from the C-terminal region of DANRE Idb1a.
Clone:	RB47030
Isotype:	Ig Fraction
Purification:	This antibody is purified through a protein A column, followed by peptide affinity purification.

Target Details

Target:	LIM Domain Binding 1 Protein (LDB1)
Abstract:	LDB1 Products
Background:	Binds to the LIM domain of a wide variety of LIM domain- containing transcription factors.

Target Details

Molecular Weight:	42715
Gene ID:	30579
UniProt:	O73715
Pathways:	Stem Cell Maintenance , Chromatin Binding

Application Details

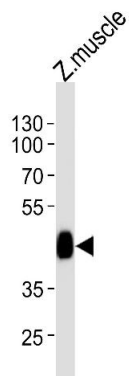
Application Notes:	WB: 1:1000
Restrictions:	For Research Use only

Handling

Format:	Liquid
Buffer:	Purified polyclonal antibody supplied in PBS with 0.09 % (W/V) sodium azide.
Preservative:	Sodium azide
Precaution of Use:	This product contains Sodium azide: a POISONOUS AND HAZARDOUS SUBSTANCE which should be handled by trained staff only.
Storage:	4 °C, -20 °C
Expiry Date:	6 months

Publications

Product cited in:	<p>Tran, Xu, Kato, Mistry, Goya, Taira, Brandt, Hirose: "Spliced isoforms of LIM-domain-binding protein (CLIM/NLI/Ldb) lacking the LIM-interaction domain." in: Journal of biochemistry, Vol. 140, Issue 1, pp. 105-19, (2006) (PubMed).</p> <p>Toyama, Kobayashi, Tomita, Dawid: "Expression of LIM-domain binding protein (ldb) genes during zebrafish embryogenesis." in: Mechanisms of development, Vol. 71, Issue 1-2, pp. 197-200, (1998) (PubMed).</p>
-------------------	---



Western Blotting

Image 1. Western blot analysis of lysate from zebra fish muscle tissue lysate, using DANRE ldb1a Antibody (C-term) Azb18695a. Azb18695a was diluted at 1:1000. A goat anti-rabbit IgG H&L(HRP) at 1:5000 dilution was used as the secondary antibody. Lysate at 35 µg.