



[Go to Product page](#)

Datasheet for ABIN1948993

## anti-XPNPEP3 antibody (AA 12-507)

### 1 Image

#### Overview

Quantity:	50 µL
Target:	XPNPEP3
Binding Specificity:	AA 12-507
Reactivity:	Human
Host:	Rabbit
Clonality:	Polyclonal
Conjugate:	This XPNPEP3 antibody is un-conjugated
Application:	Western Blotting (WB), Immunohistochemistry (IHC), Immunohistochemistry (Paraffin-embedded Sections) (IHC (p)), Immunocytochemistry (ICC)

#### Product Details

Brand:	IHC-plus™
Immunogen:	Recombinant fragment corresponding to a region within amino acids 12 and 507 of XPNPEP3 (SwissProt Q9NQH7). Percent identity by BLAST analysis: Human (100%), Rat, Bovine (90%).  Type of Immunogen: Recombinant protein
Isotype:	IgG
Specificity:	Human XPNPEP3
Purification:	Immunoaffinity purified

## Target Details

---

Target:	XPNPEP3
Alternative Name:	XPNPEP3 ( <a href="#">XPNPEP3 Products</a> )
Background:	Name/Gene ID: XPNPEP3  Synonyms: XPNPEP3, APP3, Aminopeptidase P3, NPHPL1, X-Pro aminopeptidase 3
Gene ID:	63929

## Application Details

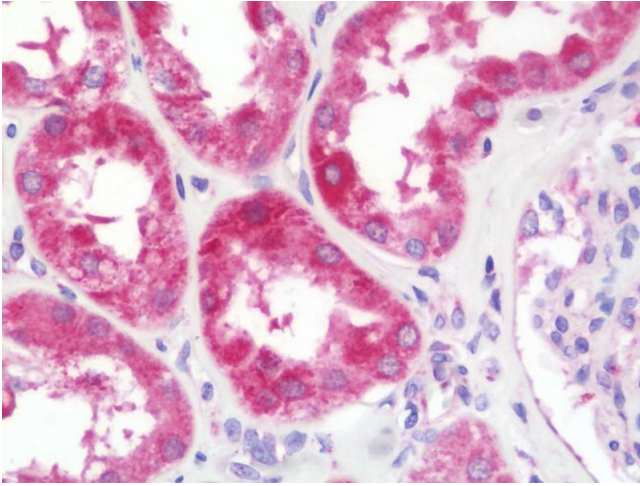
---

Application Notes:	Approved: ICC (1:100 - 1:1000), IHC, IHC-P (7.5 µg/mL), WB (1:500 - 1:3000)
Comment:	Target Species of Antibody: Human
Restrictions:	For Research Use only

## Handling

---

Format:	Liquid
Concentration:	Lot specific
Buffer:	0.1 M Tris-glycine, pH 7.0, 10 % glycerol, 0.01 % Thimerosal
Preservative:	Thimerosal (Merthiolate)
Precaution of Use:	This product contains Thimerosal (Merthiolate): a POISONOUS AND HAZARDOUS SUBSTANCE which should be handled by trained staff only.
Handling Advice:	Avoid multiple freeze-thaw cycles.
Storage:	-20 °C
Storage Comment:	Keep as concentrated solution. Aliquot and store at -20°C or below. Avoid multiple freeze-thaw cycles.



### Immunohistochemistry

**Image 1.** Anti-XPNPEP3 antibody IHC staining of human kidney. Immunohistochemistry of formalin-fixed, paraffin-embedded tissue after heat-induced antigen retrieval. Antibody concentration 7.5 ug/ml.