

Datasheet for ABIN1949803  
**anti-ZFP91 antibody (AA 216-245)**[Go to Product page](#)

## 1 Image

## Overview

Quantity:	200 µL
Target:	ZFP91
Binding Specificity:	AA 216-245
Reactivity:	Human
Host:	Rabbit
Clonality:	Polyclonal
Conjugate:	This ZFP91 antibody is un-conjugated
Application:	Western Blotting (WB), Immunohistochemistry (IHC), Immunohistochemistry (Paraffin-embedded Sections) (IHC (p))

## Product Details

Immunogen:	This ZFP91 antibody is generated from rabbits immunized with a KLH conjugated synthetic peptide between 216-245 amino acids from the Central region of human ZFP91.
Specificity:	This ZFP91 antibody is generated from rabbits immunized with a KLH conjugated synthetic peptide between 216-245 amino acids from the Central region of human ZFP91.
Purification:	Protein A purified

## Target Details

Target:	ZFP91
Alternative Name:	ZFP91 ( <a href="#">ZFP91 Products</a> )
Background:	Name/Gene ID: ZFP91

## Target Details

Synonyms: ZFP91, DMS-8, DSM-8, FKSG11, Zinc finger protein 757, Zinc finger protein 91 homolog, ZFP-91, ZNF757, Penta zinc finger protein, PZF, ZFP91 zinc finger protein

Gene ID: 80829

## Application Details

Application Notes: Approved: IHC, IHC-P (1:100), WB (1:1000)

Comment: Target Species of Antibody: Human

Restrictions: For Research Use only

## Handling

Format: Liquid

Concentration: Lot specific

Buffer: PBS, 0.09 % sodium azide

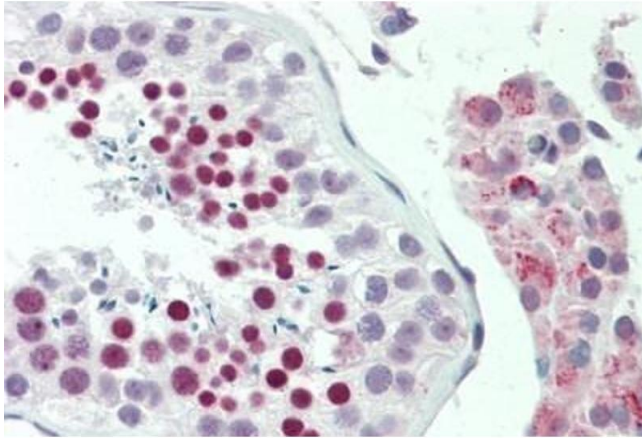
Preservative: Sodium azide

Precaution of Use: This product contains Sodium azide: a POISONOUS AND HAZARDOUS SUBSTANCE which should be handled by trained staff only.

Storage: 4 °C,-20 °C

Storage Comment: Maintain refrigerated at 2-8°C for up to 6 months. For long term storage store at -20°C.

Expiry Date: 6 months



#### Immunohistochemistry

**Image 1.** Human Testis: Formalin-Fixed, Paraffin-Embedded (FFPE)