

Datasheet for ABIN1952549

anti-F2RL2 antibody

2 Images

[Go to Product page](#)

Overview

Quantity:	250 µg
Target:	F2RL2
Reactivity:	Human, Cow
Host:	Sheep
Clonality:	Polyclonal
Conjugate:	This F2RL2 antibody is un-conjugated
Application:	ELISA, Immunohistochemistry (IHC), Immunohistochemistry (Paraffin-embedded Sections) (IHC (p))

Product Details

Brand:	IHC-plus™
Immunogen:	Bovine a-Thrombin inactivated with PPACK. Type of Immunogen: Protein
Isotype:	IgG
Specificity:	When analyzed by immunoelectrophoresis, only one arc was seen with normal bovine plasma. Identity was verified using purified bovine thrombin.
Purification:	Immunoaffinity purified

Target Details

Target:	F2RL2
---------	-------

Target Details

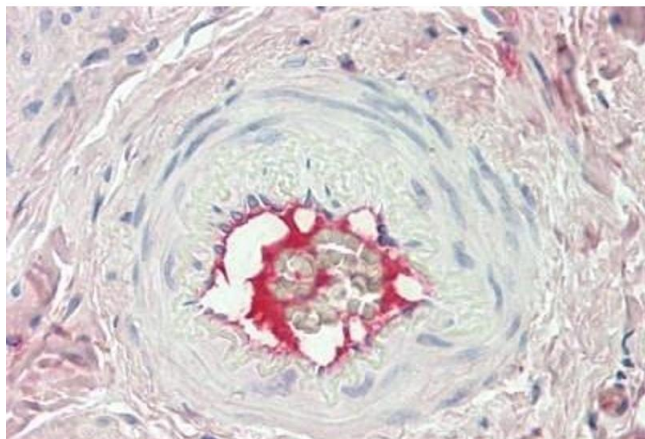
Alternative Name:	F2 / Prothrombin / Thrombin (F2RL2 Products)
Background:	Name/Gene ID: F2 Subfamily: Serine S1 Family: Protease Synonyms: F2, Prothrombin B-chain, Coagulation factor II, FACTOR II, Prothrombin, PT, RPRGL2, Serine protease, THPH1, Thrombin
Gene ID:	2147
Pathways:	Cell-Cell Junction Organization , Regulation of G-Protein Coupled Receptor Protein Signaling

Application Details

Application Notes:	Approved: ELISA, IHC, IHC-P (2.5 µg/mL) Usage: Suitable for use in ELISAs for bovine prothrombin and thrombin as well as thrombin-inhibitor complexes. This antibody preparation has been solid-phase adsorbed to remove nonspecific reactivities.
Comment:	Target Species of Antibody: Bovine
Restrictions:	For Research Use only

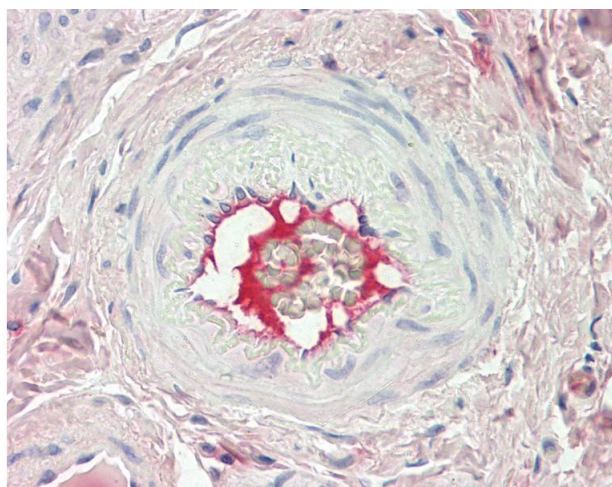
Handling

Format:	Liquid
Concentration:	Lot specific
Buffer:	10 mM HEPES, pH 7.4, 0.15 M sodium chloride, 50 % glycerol.
Handling Advice:	Avoid repeat freeze-thaw cycles.
Storage:	4 °C, -20 °C
Storage Comment:	Short term: 4°C. Long term: Store at -20°C. Avoid freeze-thaw cycles.



Immunohistochemistry

Image 1. Human Vessel: Formalin-Fixed, Paraffin-Embedded (FFPE)



Immunohistochemistry

Image 2. Anti-F2 / Prothrombin / Thrombin antibody IHC staining of human vessel. Immunohistochemistry of formalin-fixed, paraffin-embedded tissue after heat-induced antigen retrieval. Antibody concentration 2.5 ug/ml.