

Datasheet for ABIN1952569

anti-mCherry antibody[Go to Product page](#)**1** Image

Overview

Quantity:	100 µL
Target:	mCherry
Reactivity:	Discosoma
Host:	Rabbit
Clonality:	Polyclonal
Conjugate:	This mCherry antibody is un-conjugated
Application:	Western Blotting (WB), Immunofluorescence (IF), Immunocytochemistry (ICC)

Product Details

Immunogen:	Recombinant full length His tagged mCherry purified from E. coli.
	Type of Immunogen: Recombinant protein
Specificity:	MCherry
Purification:	Affinity purified

Target Details

Target:	mCherry
Alternative Name:	mCherry (mCherry Products)

Application Details

Application Notes:	Approved: ICC (1:500), IF (1:500), WB (1:1000)
--------------------	--

Application Details

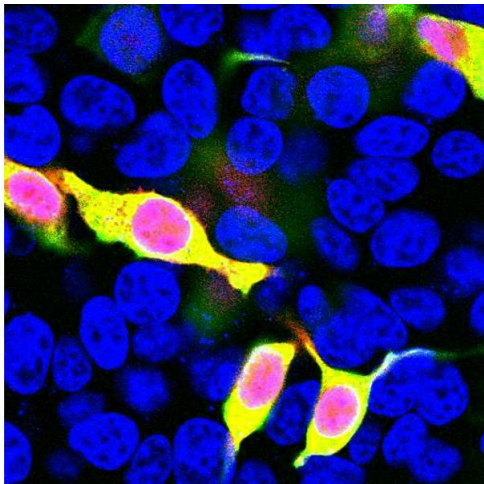
Usage: Try at dilutions of 1:500 and higher for immunofluorescence. For western blots try at 1:1000. The mCherry protein runs at about 30 kDa on SDS-PAGE gels.

Restrictions: For Research Use only

Handling

Format:	Liquid
Concentration:	Lot specific
Buffer:	10 mM sodium azide.
Preservative:	Sodium azide
Precaution of Use:	This product contains Sodium azide: a POISONOUS AND HAZARDOUS SUBSTANCE which should be handled by trained staff only.
Handling Advice:	Avoid repeated freezing and thawing.
Storage:	4 °C,-20 °C
Storage Comment:	+4°C or -20°C, Avoid repeated freezing and thawing.

Images



Immunocytochemistry

Image 1. HEK293 cells transfected in the same way and viewed in the confocal microscope. Most HEK293 cells are not transfected so only the nucleus of these cells can be visualized with a blue DNA stain. Cells which are transfected with mCherry are red. Staini ...