



[Go to Product page](#)

Datasheet for ABIN1955712
anti-CHMP2A antibody (Biotin)

1 Image

Overview

Quantity:	100 µg
Target:	CHMP2A
Reactivity:	Human
Host:	Rabbit
Clonality:	Polyclonal
Conjugate:	This CHMP2A antibody is conjugated to Biotin
Application:	Western Blotting (WB), ELISA, Immunohistochemistry (IHC), Immunohistochemistry (Paraffin-embedded Sections) (IHC (p))

Product Details

Immunogen:	Recombinant human Charged multivesicular body protein 2a protein. Type of Immunogen: Recombinant protein
Isotype:	IgG
Specificity:	Human CHMP2A
Purification:	Caprylic acid and ammonium sulfate precipitation

Target Details

Target:	CHMP2A
Alternative Name:	CHMP2A (CHMP2A Products)
Background:	Name/Gene ID: CHMP2A

Target Details

Synonyms: CHMP2A, BC2, BC-2, CHMP2, VPS2, VPS2 homolog A, VPS2A, Chromatin modifying protein 2A, Chromatin-modifying protein 2a, HVps2-1, Vps2-1

Gene ID: 27243

Pathways: [SARS-CoV-2 Protein Interactome](#)

Application Details

Application Notes: Approved: ELISA, IHC, IHC-P, WB

Usage: The applications listed have been tested for the unconjugated form of this product. Other forms have not been tested.

Comment: Target Species of Antibody: Human

Restrictions: For Research Use only

Handling

Format: Liquid

Concentration: Lot specific

Buffer: PBS, pH 7.4, 0.03 % Proclin 300, 50 % glycerol.

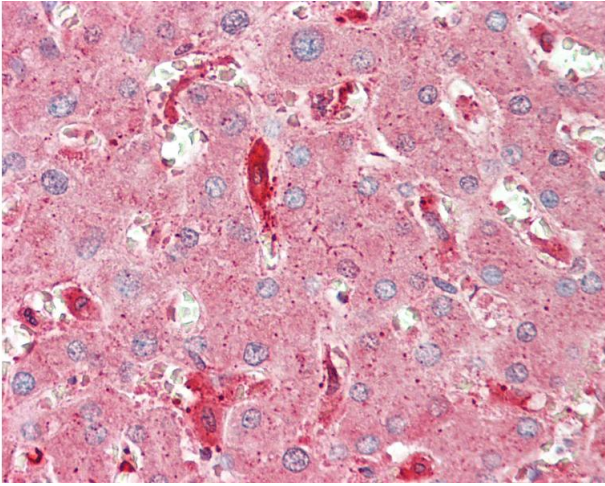
Preservative: ProClin

Precaution of Use: This product contains ProClin: a POISONOUS AND HAZARDOUS SUBSTANCE which should be handled by trained staff only.

Handling Advice: Avoid freeze-thaw cycles.

Storage: -20 °C, -80 °C

Storage Comment: Aliquot and store at -20°C or -80°C. Avoid freeze-thaw cycles.



Immunohistochemistry

Image 1. Anti-CHMP2A antibody IHC staining of human liver. Immunohistochemistry of formalin-fixed, paraffin-embedded tissue after heat-induced antigen retrieval. Antibody concentration 20 ug/ml. This image was taken for the unconjugated form of this product. ...