



[Go to Product page](#)

Datasheet for ABIN1955735  
**anti-Cathepsin F antibody (Biotin)**

1 Image

### Overview

Quantity:	100 µg
Target:	Cathepsin F (CTSF)
Reactivity:	Human
Host:	Rabbit
Clonality:	Polyclonal
Conjugate:	This Cathepsin F antibody is conjugated to Biotin
Application:	Western Blotting (WB), ELISA, Immunohistochemistry (IHC), Immunohistochemistry (Paraffin-embedded Sections) (IHC (p))

### Product Details

Immunogen:	Recombinant human Cathepsin F protein. Type of Immunogen: Recombinant protein
Isotype:	IgG
Specificity:	Human CTSF / Cathepsin F.
Purification:	Caprylic acid and ammonium sulfate precipitation

### Target Details

Target:	Cathepsin F (CTSF)
Alternative Name:	CTSF / Cathepsin F ( <a href="#">CTSF Products</a> )
Background:	Name/Gene ID: CTSF

## Target Details

---

Subfamily: Cysteine C1

Family: Protease

Synonyms: CTSF, CATSF, CLN13, Cathepsin F

---

Gene ID: 8722

## Application Details

---

Application Notes: Approved: ELISA, IHC, IHC-P, WB

Usage: The applications listed have been tested for the unconjugated form of this product.  
Other forms have not been tested.

---

Comment: Target Species of Antibody: Human

---

Restrictions: For Research Use only

---

## Handling

---

Format: Liquid

---

Concentration: Lot specific

---

Buffer: PBS, pH 7.4, 0.03 % Proclin 300, 50 % glycerol.

---

Preservative: ProClin

---

Precaution of Use: This product contains ProClin: a POISONOUS AND HAZARDOUS SUBSTANCE which should be handled by trained staff only.

---

Handling Advice: Avoid freeze-thaw cycles.

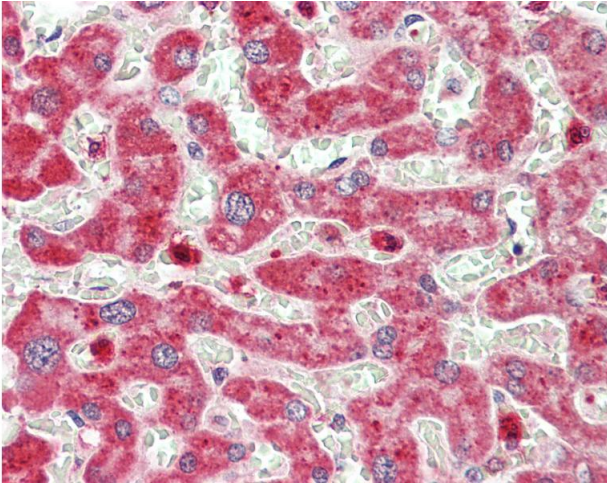
---

Storage: -20 °C, -80 °C

---

Storage Comment: Aliquot and store at -20°C or -80°C. Avoid freeze-thaw cycles.

---



### Immunohistochemistry

**Image 1.** Anti-CTSF / Cathepsin F antibody IHC staining of human liver. Immunohistochemistry of formalin-fixed, paraffin-embedded tissue after heat-induced antigen retrieval. Antibody concentration 20 ug/ml. This image was taken for the unconjugated form of t ...