

Datasheet for ABIN1955739

**anti-Cytochrome C1 antibody (Biotin)**[Go to Product page](#)**1** Image

## Overview

Quantity:	100 µg
Target:	Cytochrome C1 (CYC1)
Reactivity:	Human
Host:	Rabbit
Clonality:	Polyclonal
Conjugate:	This Cytochrome C1 antibody is conjugated to Biotin
Application:	Western Blotting (WB), ELISA, Immunohistochemistry (IHC), Immunohistochemistry (Paraffin-embedded Sections) (IHC (p))

## Product Details

Immunogen:	Recombinant human Cytochrome c1, heme protein, mitochondrial protein. Type of Immunogen: Recombinant protein
Isotype:	IgG
Specificity:	Human CYC1 / Cytochrome C-1
Purification:	Caprylic acid and ammonium sulfate precipitation

## Target Details

Target:	Cytochrome C1 (CYC1)
Alternative Name:	CYC1 / Cytochrome C-1 ( <a href="#">CYC1 Products</a> )
Background:	Name/Gene ID: CYC1

## Target Details

Synonyms: CYC1, Complex III subunit 4, Cytochrome c-1, UQCR4, Complex III subunit IV

Gene ID: 1537

## Application Details

Application Notes: Approved: ELISA, IHC, IHC-P, WB

Usage: The applications listed have been tested for the unconjugated form of this product.  
Other forms have not been tested.

Comment: Target Species of Antibody: Human

Restrictions: For Research Use only

## Handling

Format: Liquid

Concentration: Lot specific

Buffer: PBS, pH 7.4, 0.03 % Proclin 300, 50 % glycerol.

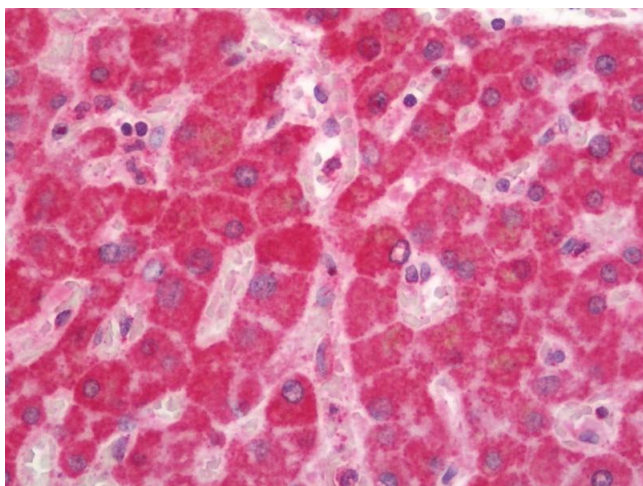
Preservative: ProClin

Precaution of Use: This product contains ProClin: a POISONOUS AND HAZARDOUS SUBSTANCE which should be handled by trained staff only.

Handling Advice: Avoid freeze-thaw cycles.

Storage: -20 °C, -80 °C

Storage Comment: Aliquot and store at -20°C or -80°C. Avoid freeze-thaw cycles.



#### Immunohistochemistry (Paraffin-embedded Sections)

**Image 1.** Human Liver: Formalin-Fixed, Paraffin-Embedded (FFPE). This image was taken for the unconjugated form of this product. Other forms have not been tested.