

Datasheet for ABIN1955874  
**anti-PSMB2 antibody (Biotin)**[Go to Product page](#)

## 1 Image

## Overview

Quantity:	100 µg
Target:	PSMB2
Reactivity:	Human
Host:	Rabbit
Clonality:	Polyclonal
Conjugate:	This PSMB2 antibody is conjugated to Biotin
Application:	Western Blotting (WB), Immunohistochemistry (IHC), ELISA, Immunohistochemistry (Paraffin-embedded Sections) (IHC (p))

## Product Details

Immunogen:	Recombinant human Proteasome subunit beta type-2 protein. Type of Immunogen: Recombinant protein
Isotype:	IgG
Specificity:	Human PSMB2
Purification:	Caprylic acid and ammonium sulfate precipitation

## Target Details

Target:	PSMB2
Alternative Name:	PSMB2 ( <a href="#">PSMB2 Products</a> )
Background:	Name/Gene ID: PSMB2

## Target Details

Subfamily: Threonine T1

Family: Protease

Synonyms: PSMB2, Macropain subunit C7-I, HC7-I, Proteasome component C7-I, Proteasome beta 2 subunit, Proteasome subunit beta type-2, C7-I, Proteasome subunit beta 2

Gene ID: 5690

Pathways: [Mitotic G1-G1/S Phases](#), [DNA Replication](#), [Synthesis of DNA](#)

## Application Details

Application Notes: Approved: ELISA, IHC, IHC-P, WB

Usage: The applications listed have been tested for the unconjugated form of this product.  
Other forms have not been tested.

Comment: Target Species of Antibody: Human

Restrictions: For Research Use only

## Handling

Format: Liquid

Concentration: Lot specific

Buffer: PBS, pH 7.4, 0.03 % Proclin 300, 50 % glycerol.

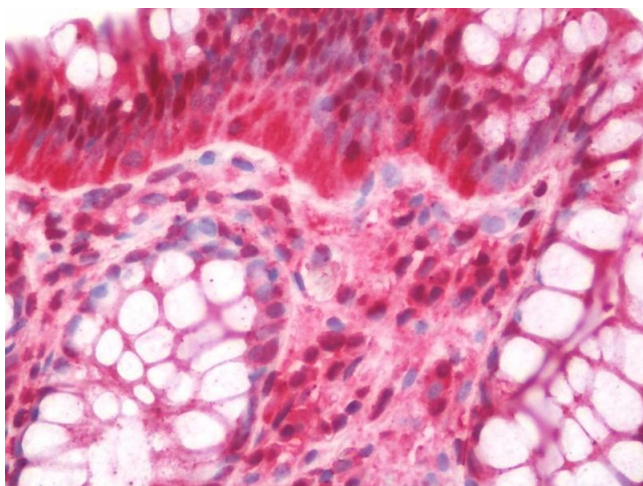
Preservative: ProClin

Precaution of Use: This product contains ProClin: a POISONOUS AND HAZARDOUS SUBSTANCE which should be handled by trained staff only.

Handling Advice: Avoid freeze-thaw cycles.

Storage: -20 °C, -80 °C

Storage Comment: Aliquot and store at -20°C or -80°C. Avoid freeze-thaw cycles.



#### Immunohistochemistry

**Image 1.** Human Colon: Formalin-Fixed, Paraffin-Embedded (FFPE). This image was taken for the unconjugated form of this product. Other forms have not been tested.