



[Go to Product page](#)

Datasheet for ABIN1955902
anti-RPS16 antibody (Biotin)

1 Image

Overview

Quantity:	100 µg
Target:	RPS16
Reactivity:	Human
Host:	Rabbit
Clonality:	Polyclonal
Conjugate:	This RPS16 antibody is conjugated to Biotin
Application:	ELISA, Western Blotting (WB), Immunohistochemistry (IHC), Immunohistochemistry (Paraffin-embedded Sections) (IHC (p))

Product Details

Immunogen:	Recombinant human 40S ribosomal protein S16 protein. Type of Immunogen: Recombinant protein
Isotype:	IgG
Specificity:	Human RPS16 / S16
Purification:	Caprylic acid and ammonium sulfate precipitation

Target Details

Target:	RPS16
Alternative Name:	RPS16 / S16 (RPS16 Products)
Background:	Name/Gene ID: RPS16

Target Details

Synonyms: RPS16, 40S ribosomal protein S16, S16, Ribosomal protein S16

Gene ID: 6217

Application Details

Application Notes: Approved: ELISA, IHC, IHC-P, WB

Usage: The applications listed have been tested for the unconjugated form of this product.
Other forms have not been tested.

Comment: Target Species of Antibody: Human

Restrictions: For Research Use only

Handling

Format: Liquid

Concentration: Lot specific

Buffer: PBS, pH 7.4, 0.03 % Proclin 300, 50 % glycerol.

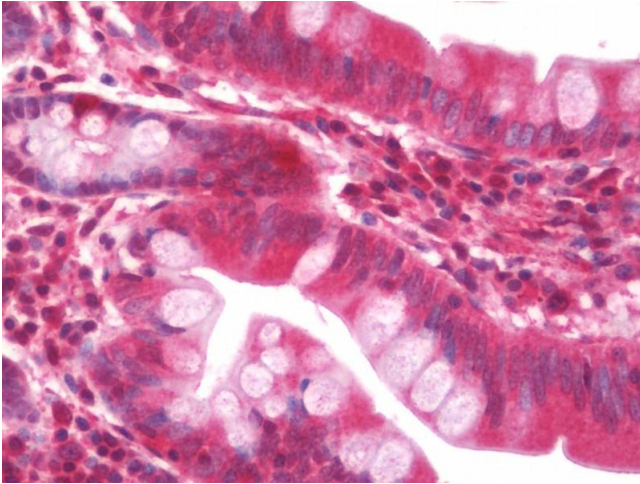
Preservative: ProClin

Precaution of Use: This product contains ProClin: a POISONOUS AND HAZARDOUS SUBSTANCE which should be handled by trained staff only.

Handling Advice: Avoid freeze-thaw cycles.

Storage: -20 °C,-80 °C

Storage Comment: Aliquot and store at -20°C or -80°C. Avoid freeze-thaw cycles.



Immunohistochemistry

Image 1. Anti-RPS16 / S16 antibody IHC staining of human small intestine. Immunohistochemistry of formalin-fixed, paraffin-embedded tissue after heat-induced antigen retrieval. Antibody concentration 10 ug/ml. This image was taken for the unconjugated form o ...