



[Go to Product page](#)

Datasheet for ABIN1956956  
**anti-COX6B1 antibody (FITC)**

1 Image

Overview

Quantity:	100 µg
Target:	COX6B1
Reactivity:	Human, Mouse, Rat, Cow
Host:	Rabbit
Clonality:	Polyclonal
Conjugate:	This COX6B1 antibody is conjugated to FITC
Application:	Western Blotting (WB), ELISA, Immunohistochemistry (IHC), Immunohistochemistry (Paraffin-embedded Sections) (IHC (p))

Product Details

Immunogen:	Recombinant human Cytochrome c oxidase subunit 6B1 protein. Type of Immunogen: Recombinant protein
Isotype:	IgG
Specificity:	Human COXG / COX6B1
Purification:	Caprylic acid and ammonium sulfate precipitation

Target Details

Target:	COX6B1
Alternative Name:	COXG / COX6B1 ( <a href="#">COX6B1 Products</a> )
Background:	Name/Gene ID: COX6B1

## Target Details

---

Synonyms: COX6B1, COX6B, COXVIb1, COX VIb-1, COXG

Gene ID: 1340

## Application Details

---

Application Notes: Approved: ELISA, IHC, IHC-P, WB

Usage: The applications listed have been tested for the unconjugated form of this product.  
Other forms have not been tested.

Comment: Target Species of Antibody: Human

Restrictions: For Research Use only

## Handling

---

Format: Liquid

Concentration: Lot specific

Buffer: PBS, pH 7.4, 0.03 % Proclin 300, 50 % glycerol.

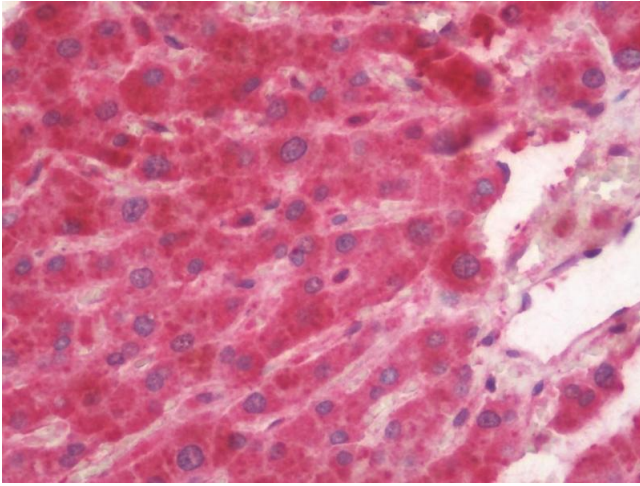
Preservative: ProClin

Precaution of Use: This product contains ProClin: a POISONOUS AND HAZARDOUS SUBSTANCE which should be handled by trained staff only.

Handling Advice: Avoid freeze-thaw cycles.

Storage: -20 °C,-80 °C

Storage Comment: Aliquot and store at -20°C or -80°C. Avoid freeze-thaw cycles.



### Immunohistochemistry

**Image 1.** Anti-COXG / COX6B1 antibody IHC staining of human liver. Immunohistochemistry of formalin-fixed, paraffin-embedded tissue after heat-induced antigen retrieval. Antibody concentration 5 ug/ml. This image was taken for the unconjugated form of this pr ...