

Datasheet for ABIN1956986
anti-ENPEP antibody (FITC)



[Go to Product page](#)

1 Image

Overview

Quantity:	100 µg
Target:	ENPEP
Reactivity:	Human
Host:	Rabbit
Clonality:	Polyclonal
Conjugate:	This ENPEP antibody is conjugated to FITC
Application:	Western Blotting (WB), Immunohistochemistry (IHC), ELISA, Immunohistochemistry (Paraffin-embedded Sections) (IHC (p))

Product Details

Immunogen:	Recombinant human Glutamyl aminopeptidase protein. Type of Immunogen: Recombinant protein
Isotype:	IgG
Specificity:	Human ENPEP / Aminopeptidase A
Purification:	Caprylic acid and ammonium sulfate precipitation

Target Details

Target:	ENPEP
Alternative Name:	ENPEP / Aminopeptidase A (ENPEP Products)
Background:	Name/Gene ID: ENPEP

Target Details

Subfamily: Metallopeptidase M1

Family: Exopeptidase

Synonyms: ENPEP, APA, Aminopeptidase A, AP-A, CD249 antigen, Differentiation antigen gp160, EAP, Glutamyl aminopeptidase, gp160, CD249

Gene ID: 2028

Pathways: [Peptide Hormone Metabolism](#), [Regulation of Systemic Arterial Blood Pressure by Hormones](#)

Application Details

Application Notes: Approved: ELISA, IHC, IHC-P, WB

Usage: The applications listed have been tested for the unconjugated form of this product.
Other forms have not been tested.

Comment: Target Species of Antibody: Human

Restrictions: For Research Use only

Handling

Format: Liquid

Concentration: Lot specific

Buffer: PBS, pH 7.4, 0.03 % Proclin 300, 50 % glycerol.

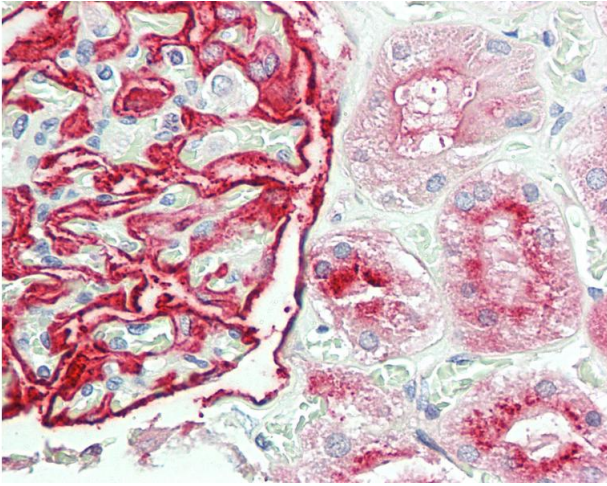
Preservative: ProClin

Precaution of Use: This product contains ProClin: a POISONOUS AND HAZARDOUS SUBSTANCE which should be handled by trained staff only.

Handling Advice: Avoid freeze-thaw cycles.

Storage: -20 °C, -80 °C

Storage Comment: Aliquot and store at -20°C or -80°C. Avoid freeze-thaw cycles.



Immunohistochemistry

Image 1. Anti-ENPEP / Aminopeptidase A antibody IHC staining of human kidney. Immunohistochemistry of formalin-fixed, paraffin-embedded tissue after heat-induced antigen retrieval. Antibody concentration 20 ug/ml. This image was taken for the unconjugated fo ...