

Datasheet for ABIN1957055  
**anti-MAP1S antibody (FITC)**[Go to Product page](#)

## 1 Image

## Overview

Quantity:	100 µg
Target:	MAP1S
Reactivity:	Human
Host:	Rabbit
Clonality:	Polyclonal
Conjugate:	This MAP1S antibody is conjugated to FITC
Application:	ELISA, Western Blotting (WB), Immunohistochemistry (IHC), Immunohistochemistry (Paraffin-embedded Sections) (IHC (p))

## Product Details

Immunogen:	Recombinant human Microtubule-associated protein 1S protein.  Type of Immunogen: Recombinant protein
Isotype:	IgG
Specificity:	Human MAP1S
Purification:	Caprylic acid and ammonium sulfate precipitation

## Target Details

Target:	MAP1S
Alternative Name:	MAP1S ( <a href="#">MAP1S Products</a> )
Background:	Name/Gene ID: MAP1S

## Target Details

Synonyms: MAP1S, BPY2-interacting protein 1, MAP8, VCY2-interacting protein 1, VCY2IP-1, VCY2IP1, BPY2 interacting protein 1, BPY2IP1, VCY2 interacting protein 1, C19orf5, MAP-1S

Gene ID: 55201

## Application Details

Application Notes: Approved: ELISA, IHC, IHC-P, WB

Usage: The applications listed have been tested for the unconjugated form of this product.  
Other forms have not been tested.

Comment: Target Species of Antibody: Human

Restrictions: For Research Use only

## Handling

Format: Liquid

Concentration: Lot specific

Buffer: PBS, pH 7.4, 0.03 % Proclin 300, 50 % glycerol.

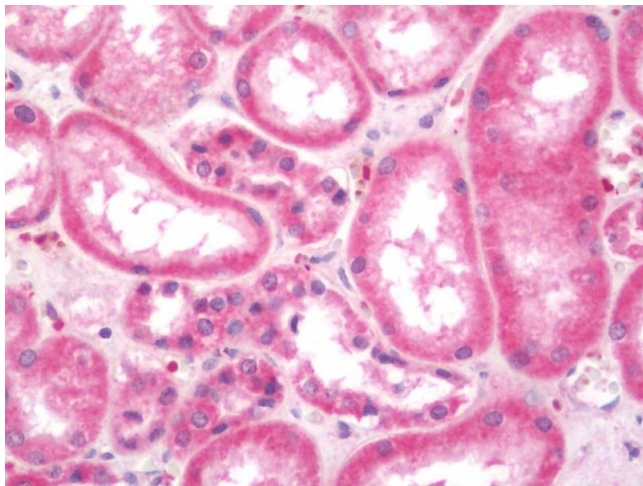
Preservative: ProClin

Precaution of Use: This product contains ProClin: a POISONOUS AND HAZARDOUS SUBSTANCE which should be handled by trained staff only.

Handling Advice: Avoid freeze-thaw cycles.

Storage: -20 °C, -80 °C

Storage Comment: Aliquot and store at -20°C or -80°C. Avoid freeze-thaw cycles.



#### Immunohistochemistry (Paraffin-embedded Sections)

**Image 1.** Human Kidney: Formalin-Fixed, Paraffin-Embedded (FFPE). This image was taken for the unconjugated form of this product. Other forms have not been tested.