



[Go to Product page](#)

Datasheet for ABIN1957082  
**anti-Oncostatin M antibody (FITC)**

1 Image

Overview

Quantity:	100 µg
Target:	Oncostatin M (OSM)
Reactivity:	Human
Host:	Rabbit
Clonality:	Polyclonal
Conjugate:	This Oncostatin M antibody is conjugated to FITC
Application:	Western Blotting (WB), ELISA, Immunohistochemistry (IHC), Immunohistochemistry (Paraffin-embedded Sections) (IHC (p))

Product Details

Immunogen:	Recombinant human Oncostatin-M protein. Type of Immunogen: Recombinant protein
Isotype:	IgG
Specificity:	Human OSM / Oncostatin M
Purification:	Caprylic acid and ammonium sulfate precipitation

Target Details

Target:	Oncostatin M (OSM)
Alternative Name:	OSM / Oncostatin M ( <a href="#">OSM Products</a> )
Background:	Name/Gene ID: OSM

## Target Details

---

Synonyms: OSM, Oncostatin-M, Oncostatin M

Gene ID: 5008

Pathways: [JAK-STAT Signaling](#), [Negative Regulation of Hormone Secretion](#)

## Application Details

---

Application Notes: Approved: ELISA, IHC, IHC-P, WB

Usage: The applications listed have been tested for the unconjugated form of this product.  
Other forms have not been tested.

Comment: Target Species of Antibody: Human

Restrictions: For Research Use only

## Handling

---

Format: Liquid

Concentration: Lot specific

Buffer: PBS, pH 7.4, 0.03 % Proclin 300, 50 % glycerol.

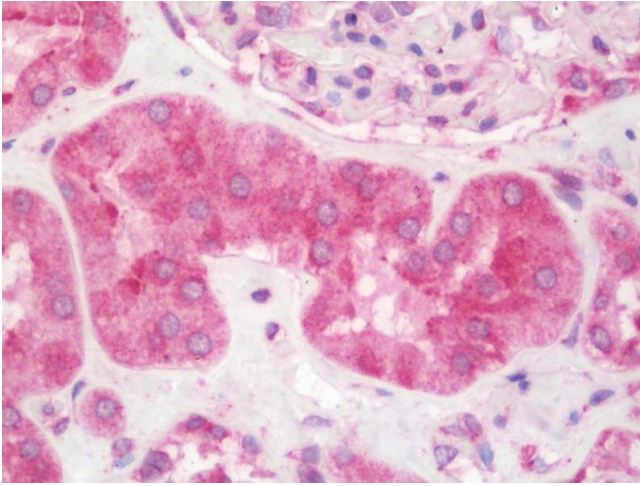
Preservative: ProClin

Precaution of Use: This product contains ProClin: a POISONOUS AND HAZARDOUS SUBSTANCE which should be handled by trained staff only.

Handling Advice: Avoid freeze-thaw cycles.

Storage: -20 °C, -80 °C

Storage Comment: Aliquot and store at -20°C or -80°C. Avoid freeze-thaw cycles.



### Immunohistochemistry

**Image 1.** Anti-OSM / Oncostatin M antibody IHC staining of human kidney. Immunohistochemistry of formalin-fixed, paraffin-embedded tissue after heat-induced antigen retrieval. Antibody concentration 10 ug/ml. This image was taken for the unconjugated form of ...