

Datasheet for ABIN1957101  
**anti-PPIA antibody (FITC)**



[Go to Product page](#)

1 Image

## Overview

Quantity:	100 µg
Target:	PPIA
Reactivity:	Human, Mouse, Rat
Host:	Rabbit
Clonality:	Polyclonal
Conjugate:	This PPIA antibody is conjugated to FITC
Application:	Western Blotting (WB), Immunohistochemistry (IHC), ELISA, Immunohistochemistry (Paraffin-embedded Sections) (IHC (p))

## Product Details

Immunogen:	Recombinant human Peptidyl-prolyl cis-trans isomerase A protein.  Type of Immunogen: Recombinant protein
Isotype:	IgG
Specificity:	Human PPIA / Cyclophilin A
Purification:	Caprylic acid and ammonium sulfate precipitation

## Target Details

Target:	PPIA
Alternative Name:	PPIA / Cyclophilin A ( <a href="#">PPIA Products</a> )
Background:	Name/Gene ID: PPIA

## Target Details

Synonyms: PPIA, Cyclophilin, Cyclosporin A-binding protein, Cyclophilin A, PPlase A, Rotamase A, CYPH, T cell cyclophilin

Gene ID: 5478

## Application Details

Application Notes: Approved: ELISA, IHC, IHC-P, WB

Usage: The applications listed have been tested for the unconjugated form of this product.  
Other forms have not been tested.

Comment: Target Species of Antibody: Human

Restrictions: For Research Use only

## Handling

Format: Liquid

Concentration: Lot specific

Buffer: PBS, pH 7.4, 0.03 % Proclin 300, 50 % glycerol.

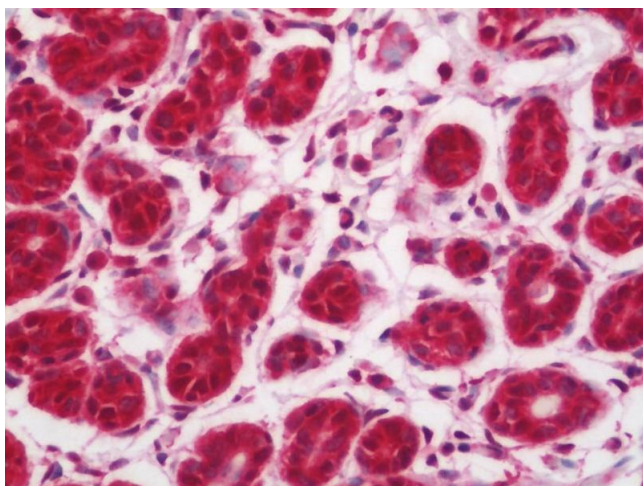
Preservative: ProClin

Precaution of Use: This product contains ProClin: a POISONOUS AND HAZARDOUS SUBSTANCE which should be handled by trained staff only.

Handling Advice: Avoid freeze-thaw cycles.

Storage: -20 °C,-80 °C

Storage Comment: Aliquot and store at -20°C or -80°C. Avoid freeze-thaw cycles.



#### Immunohistochemistry (Paraffin-embedded Sections)

**Image 1.** Human Breast: Formalin-Fixed, Paraffin-Embedded (FFPE). This image was taken for the unconjugated form of this product. Other forms have not been tested.