



[Go to Product page](#)

Datasheet for ABIN1957123
anti-RPL17 antibody (FITC)

1 Image

Overview

Quantity:	100 µg
Target:	RPL17
Reactivity:	Human
Host:	Rabbit
Clonality:	Polyclonal
Conjugate:	This RPL17 antibody is conjugated to FITC
Application:	Western Blotting (WB), ELISA, Immunohistochemistry (IHC), Immunohistochemistry (Paraffin-embedded Sections) (IHC (p))

Product Details

Immunogen:	Recombinant human 60S ribosomal protein L17 protein. Type of Immunogen: Recombinant protein
Isotype:	IgG
Specificity:	Human RPL17 / L17
Purification:	Caprylic acid and ammonium sulfate precipitation

Target Details

Target:	RPL17
Alternative Name:	RPL17 / L17 (RPL17 Products)
Background:	Name/Gene ID: RPL17

Target Details

Synonyms: RPL17, 60S ribosomal protein L23, 60S ribosomal protein L17, L17, Ribosomal protein L17, PD-1

Gene ID: 6139

Application Details

Application Notes: Approved: ELISA, IHC, IHC-P, WB

Usage: The applications listed have been tested for the unconjugated form of this product. Other forms have not been tested.

Comment: Target Species of Antibody: Human

Restrictions: For Research Use only

Handling

Format: Liquid

Concentration: Lot specific

Buffer: PBS, pH 7.4, 0.03 % Proclin 300, 50 % glycerol.

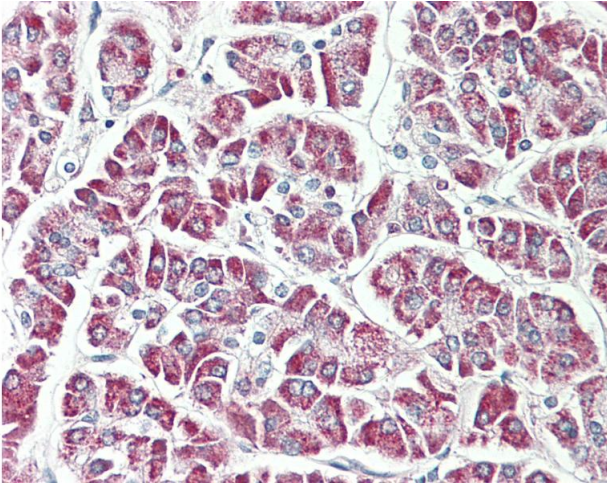
Preservative: ProClin

Precaution of Use: This product contains ProClin: a POISONOUS AND HAZARDOUS SUBSTANCE which should be handled by trained staff only.

Handling Advice: Avoid freeze-thaw cycles.

Storage: -20 °C, -80 °C

Storage Comment: Aliquot and store at -20°C or -80°C. Avoid freeze-thaw cycles.



Immunohistochemistry

Image 1. Anti-RPL17 / L17 antibody IHC staining of human pancreas. Immunohistochemistry of formalin-fixed, paraffin-embedded tissue after heat-induced antigen retrieval. Antibody concentration 20 ug/ml. This image was taken for the unconjugated form of this ...