



[Go to Product page](#)

Datasheet for ABIN1957148
anti-SCAMP3 antibody (FITC)

1 Image

Overview

Quantity:	100 µg
Target:	SCAMP3
Reactivity:	Human
Host:	Rabbit
Clonality:	Polyclonal
Conjugate:	This SCAMP3 antibody is conjugated to FITC
Application:	ELISA, Western Blotting (WB), Immunohistochemistry (IHC), Immunofluorescence (IF), Immunohistochemistry (Paraffin-embedded Sections) (IHC (p))

Product Details

Immunogen:	Recombinant human Secretory carrier-associated membrane protein 3 protein. Type of Immunogen: Recombinant protein
Isotype:	IgG
Specificity:	Human SCAMP3
Purification:	Caprylic acid and ammonium sulfate precipitation

Target Details

Target:	SCAMP3
Alternative Name:	SCAMP3 (SCAMP3 Products)
Background:	Name/Gene ID: SCAMP3

Target Details

Synonyms: SCAMP3, C1orf3, Propin 1, PROPIN1

Gene ID: 10067

Application Details

Application Notes: Approved: ELISA, IF, IHC, IHC-P, WB

Usage: The applications listed have been tested for the unconjugated form of this product.
Other forms have not been tested.

Comment: Target Species of Antibody: Human

Restrictions: For Research Use only

Handling

Format: Liquid

Concentration: Lot specific

Buffer: PBS, pH 7.4, 0.03 % Proclin 300, 50 % glycerol.

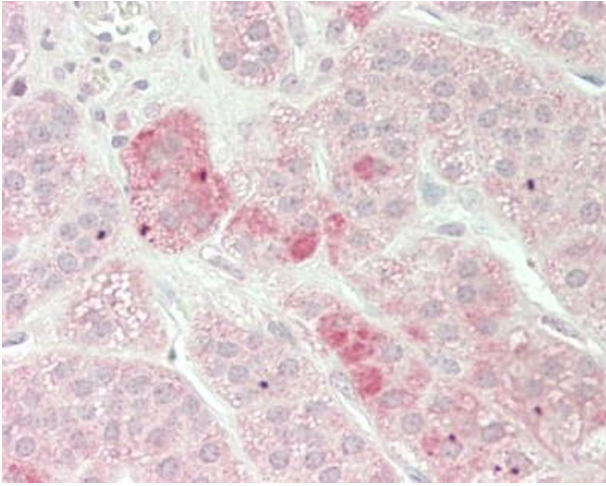
Preservative: ProClin

Precaution of Use: This product contains ProClin: a POISONOUS AND HAZARDOUS SUBSTANCE which should be handled by trained staff only.

Handling Advice: Avoid freeze-thaw cycles.

Storage: -20 °C,-80 °C

Storage Comment: Aliquot and store at -20°C or -80°C. Avoid freeze-thaw cycles.



Immunohistochemistry (Paraffin-embedded Sections)

Image 1. Human Adrenal: Formalin-Fixed, Paraffin-Embedded (FFPE). This image was taken for the unconjugated form of this product. Other forms have not been tested.