

Datasheet for ABIN1957215  
**anti-VTCN1 antibody (AA 26-258) (FITC)**[Go to Product page](#)

## 1 Image

## Overview

Quantity:	100 µg
Target:	VTCN1
Binding Specificity:	AA 26-258
Reactivity:	Human
Host:	Rabbit
Clonality:	Polyclonal
Conjugate:	This VTCN1 antibody is conjugated to FITC
Application:	Western Blotting (WB), ELISA, Immunohistochemistry (IHC), Immunohistochemistry (Paraffin-embedded Sections) (IHC (p))

## Product Details

Immunogen:	Recombinant protein encoding amino acids 26-258 of Uniprot Q7Z7D3
	Type of Immunogen: Recombinant protein
Isotype:	IgG
Specificity:	Human VTCN1
Purification:	Caprylic acid and ammonium sulfate precipitation

## Target Details

Target:	VTCN1
Alternative Name:	VTCN1 / B7-H4 ( <a href="#">VTCN1 Products</a> )

## Target Details

Background:	Name/Gene ID: VTCN1  Synonyms: VTCN1, B7 superfamily member 1, B7 Superfamily, member 1, B7h.5, B7S1, B7H4, PRO1291, VCTN1, RP11-229A19.4, B7 family member, H4, B7-H4, B7X, Protein B7S1
-------------	---

Gene ID:	79679
----------	-------

## Application Details

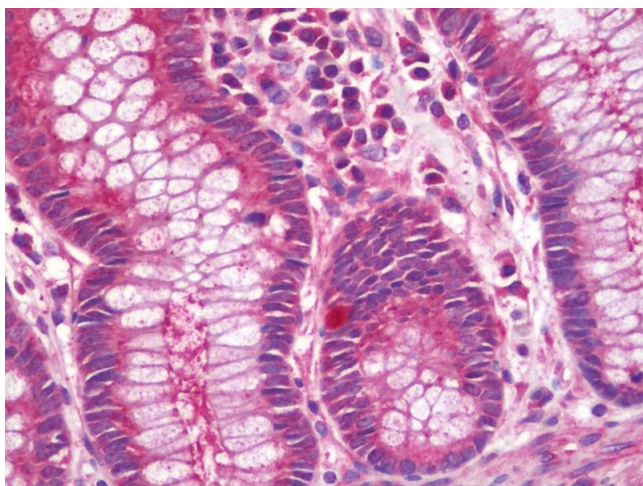
Application Notes:	Approved: ELISA, IHC, IHC-P, WB  Usage: The applications listed have been tested for the unconjugated form of this product. Other forms have not been tested.
--------------------	--

Comment:	Target Species of Antibody: Human
----------	-----------------------------------

Restrictions:	For Research Use only
---------------	-----------------------

## Handling

Format:	Liquid
Concentration:	Lot specific
Buffer:	PBS, pH 7.4, 0.03 % Proclin 300, 50 % glycerol.
Preservative:	ProClin
Precaution of Use:	This product contains ProClin: a POISONOUS AND HAZARDOUS SUBSTANCE which should be handled by trained staff only.
Handling Advice:	Avoid freeze-thaw cycles.
Storage:	-20 °C, -80 °C
Storage Comment:	Aliquot and store at -20°C or -80°C. Avoid freeze-thaw cycles.



#### Immunohistochemistry

**Image 1.** Anti-VTCN1 / B7-H4 antibody IHC staining of human colon. Immunohistochemistry of formalin-fixed, paraffin-embedded tissue after heat-induced antigen retrieval. Antibody concentration 20 ug/ml. This image was taken for the unconjugated form of this p ...