

Datasheet for ABIN1957251  
**anti-PPP1R11 antibody (HRP)**[Go to Product page](#)

## 1 Image

## Overview

Quantity:	100 µg
Target:	PPP1R11
Reactivity:	Human
Host:	Rabbit
Clonality:	Polyclonal
Conjugate:	This PPP1R11 antibody is conjugated to HRP
Application:	ELISA, Immunohistochemistry (IHC), Western Blotting (WB), Immunohistochemistry (Paraffin-embedded Sections) (IHC (p))

## Product Details

Immunogen:	Recombinant human Protein phosphatase 1 regulatory subunit 11 protein.  Type of Immunogen: Recombinant protein
Isotype:	IgG
Specificity:	Human PPP1R11
Purification:	Caprylic acid and ammonium sulfate precipitation

## Target Details

Target:	PPP1R11
Alternative Name:	PPP1R11 ( <a href="#">PPP1R11 Products</a> )
Background:	Name/Gene ID: PPP1R11

## Target Details

Synonyms: PPP1R11, HCG-V, HCG V, Inhibitor-3, HCGV, TCTEX5, IPP3, TCTE5

Gene ID: 6992

## Application Details

Application Notes: Approved: ELISA, IHC, IHC-P, WB

Usage: The applications listed have been tested for the unconjugated form of this product.  
Other forms have not been tested.

Comment: Target Species of Antibody: Human

Restrictions: For Research Use only

## Handling

Format: Liquid

Concentration: Lot specific

Buffer: PBS, pH 7.4, 0.03 % Proclin 300, 50 % glycerol.

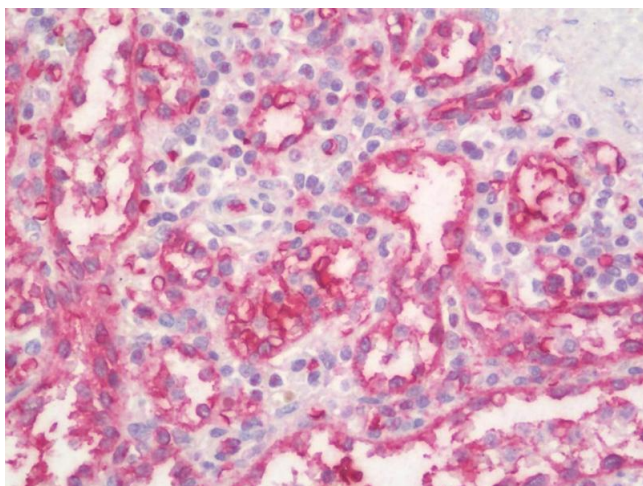
Preservative: ProClin

Precaution of Use: This product contains ProClin: a POISONOUS AND HAZARDOUS SUBSTANCE which should be handled by trained staff only.

Handling Advice: Avoid freeze-thaw cycles.

Storage: -20 °C,-80 °C

Storage Comment: Aliquot and store at -20°C or -80°C. Avoid freeze-thaw cycles.



#### Immunohistochemistry

**Image 1.** Anti-PPP1R11 antibody IHC staining of human spleen. Immunohistochemistry of formalin-fixed, paraffin-embedded tissue after heat-induced antigen retrieval. Antibody concentration 5 ug/ml. This image was taken for the unconjugated form of this product ...