

Datasheet for ABIN195735
anti-PDE11A antibody (Internal Region)[Go to Product page](#)

2 Images

Overview

Quantity:	100 µg
Target:	PDE11A
Binding Specificity:	Internal Region
Reactivity:	Human
Host:	Goat
Clonality:	Polyclonal
Conjugate:	This PDE11A antibody is un-conjugated
Application:	ELISA, Western Blotting (WB), Immunohistochemistry (IHC)

Product Details

Purpose:	PDE11A
Immunogen:	Peptide with sequence C-NSFKESMEKSSYSD, from the internal region of the protein sequence according to NP_058649.3 , NP_001070665.1, NP_001070826.1, NP_001070664.1.
Sequence:	NSFKESMEKS SYSD
Isotype:	IgG
Specificity:	This antibody is expected to recognise all four reported isoforms (NP_058649.3 , NP_001070665.1, NP_001070826.1, NP_001070664.1).
Cross-Reactivity:	Dog, Human, Mouse, Rat
Purification:	Purified from goat serum by ammonium sulphate precipitation followed by antigen affinity chromatography using the immunizing peptide.

Product Details

Grade: Verified

Target Details

Target: PDE11A

Alternative Name: PDE11A ([PDE11A Products](#))

Background: PDE11A, phosphodiesterase 11A , FLJ23693, MGC133355, MGC133356, PPNAD2 , cAMP and cGMP cyclic nucleotide phosphodiesterase 11A, cyclic nucleotide phosphodiesterase 11A, dual 3',5'-cyclic-AMP and -GMP phosphodiesterase 11A

Gene ID: 50940, 241489, 140928

NCBI Accession: [NP_058649](#), [NP_001070665](#), [NP_001070826](#), [NP_001070664](#)

Pathways: [cAMP Metabolic Process](#)

Application Details

Application Notes: Immunohistochemistry: Paraffin embedded Human Prostate. Recommended concentration: 10 µg/mL.
Western Blot: Approx 60-65 kDa band observed in Human Skeletal Muscle and Human Prostate lysates (calculated MW of 65.7 kDa according to NP_001070826.1). Recommended concentration: 0.5-1.5 µg/mL.
Peptide ELISA: antibody detection limit dilution 1:2000.

Restrictions: For Research Use only

Handling

Format: Liquid

Concentration: 0.5 mg/mL

Buffer: Supplied at 0.5 mg/mL in Tris saline, 0.02 % sodium azide, pH 7.3 with 0.5 % bovine serum albumin.

Preservative: Sodium azide

Precaution of Use: This product contains Sodium azide: a POISONOUS AND HAZARDOUS SUBSTANCE which should be handled by trained staff only.

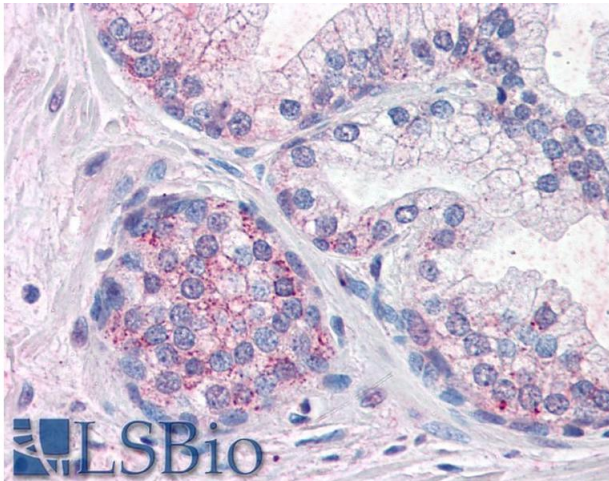
Handling Advice: Minimize freezing and thawing.

Handling

Storage: -20 °C

Storage Comment: Aliquot and store at -20°C, with minimal freeze/thawing. A working aliquot may be refrigerated at 4°C for a few weeks and still remain viable.

Images



Immunohistochemistry

Image 1. ABIN195735 (10µg/ml) staining of paraffin embedded Human Prostate. Steamed antigen retrieval with citrate buffer pH 6, AP-staining.

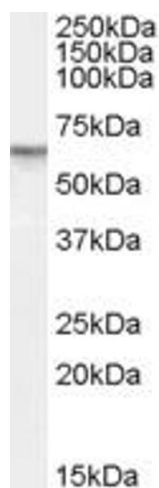


Image 2. ABIN195735 (1µg/ml) staining of Human Prostate lysate (35µg protein in RIPA buffer). Primary incubation was 1 hour. Detected by chemiluminescence.