



[Go to Product page](#)

Datasheet for ABIN1958017
anti-ATP5F1D antibody (HRP)

1 Image

Overview

Quantity:	100 µg
Target:	ATP5F1D
Reactivity:	Human
Host:	Rabbit
Clonality:	Polyclonal
Conjugate:	This ATP5F1D antibody is conjugated to HRP
Application:	ELISA, Western Blotting (WB), Immunohistochemistry (IHC), Immunohistochemistry (Paraffin-embedded Sections) (IHC (p))

Product Details

Immunogen:	Recombinant human ATP synthase subunit delta, mitochondrial protein. Type of Immunogen: Recombinant protein
Isotype:	IgG
Specificity:	Human ATP5D
Purification:	Caprylic acid and ammonium sulfate precipitation

Target Details

Target:	ATP5F1D
Alternative Name:	ATP5D (ATP5F1D Products)
Background:	Name/Gene ID: ATP5D

Target Details

Subfamily: ATPase - F type

Family: Transporter

Synonyms: ATP5D, F-ATPase delta subunit

Gene ID: 513

Pathways: [Proton Transport](#), [Ribonucleoside Biosynthetic Process](#)

Application Details

Application Notes: Approved: ELISA, IHC, IHC-P, WB

Usage: The applications listed have been tested for the unconjugated form of this product.
Other forms have not been tested.

Comment: Target Species of Antibody: Human

Restrictions: For Research Use only

Handling

Format: Liquid

Concentration: Lot specific

Buffer: PBS, pH 7.4, 0.03 % Proclin 300, 50 % glycerol.

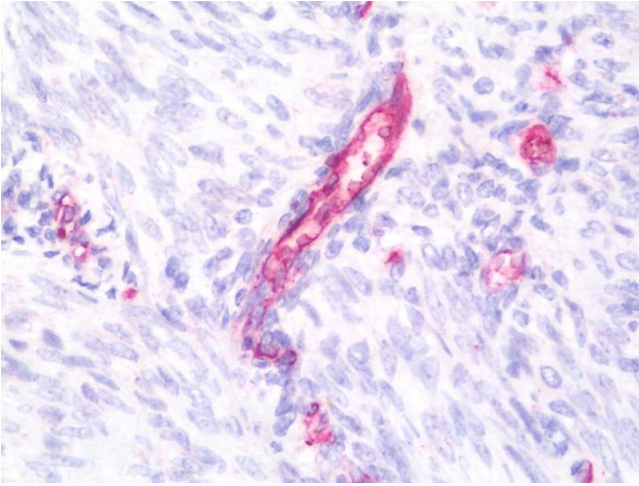
Preservative: ProClin

Precaution of Use: This product contains ProClin: a POISONOUS AND HAZARDOUS SUBSTANCE which should be handled by trained staff only.

Handling Advice: Avoid freeze-thaw cycles.

Storage: -20 °C,-80 °C

Storage Comment: Aliquot and store at -20°C or -80°C. Avoid freeze-thaw cycles.



Immunohistochemistry

Image 1. Anti-ATP5D antibody IHC staining of human uterus, endometrium. Immunohistochemistry of formalin-fixed, paraffin-embedded tissue after heat-induced antigen retrieval. Antibody concentration 10 ug/ml. This image was taken for the unconjugated form of ...