

Datasheet for ABIN1958029
anti-BMP6 antibody (HRP)[Go to Product page](#)

1 Image

Overview

Quantity:	100 µg
Target:	BMP6
Reactivity:	Human
Host:	Rabbit
Clonality:	Polyclonal
Conjugate:	This BMP6 antibody is conjugated to HRP
Application:	Western Blotting (WB), ELISA, Immunohistochemistry (IHC), Immunohistochemistry (Paraffin-embedded Sections) (IHC (p))

Product Details

Immunogen:	Recombinant human Bone morphogenetic protein 6 protein. Type of Immunogen: Recombinant protein
Isotype:	IgG
Specificity:	Human BMP6 / BMP-6
Purification:	Caprylic acid and ammonium sulfate precipitation

Target Details

Target:	BMP6
Alternative Name:	BMP6 / BMP-6 (BMP6 Products)
Background:	Name/Gene ID: BMP6

Target Details

Family: TGF beta

Synonyms: BMP6, BMP-6, Bone morphogenetic protein 6, VG-1-related protein, VGR1, VG-1-R, VGR, Vg1, Vg1-related sequence, VGR-1

Gene ID: 654

Pathways: [Regulation of Hormone Metabolic Process](#), [Regulation of Hormone Biosynthetic Process](#)

Application Details

Application Notes: Approved: ELISA, IHC, IHC-P, WB

Usage: The applications listed have been tested for the unconjugated form of this product.
Other forms have not been tested.

Comment: Target Species of Antibody: Human

Restrictions: For Research Use only

Handling

Format: Liquid

Concentration: Lot specific

Buffer: PBS, pH 7.4, 0.03 % Proclin 300, 50 % glycerol.

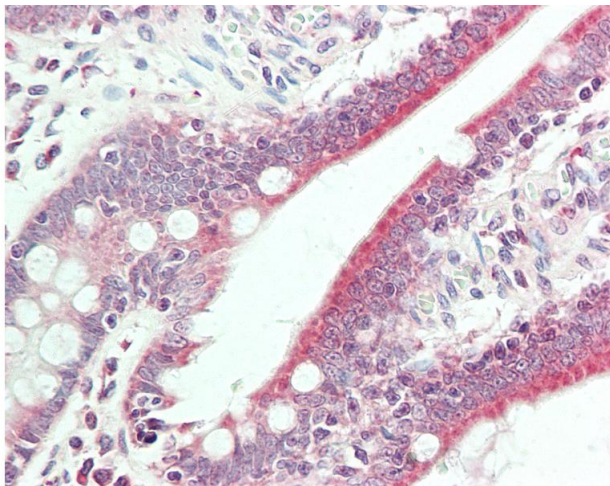
Preservative: ProClin

Precaution of Use: This product contains ProClin: a POISONOUS AND HAZARDOUS SUBSTANCE which should be handled by trained staff only.

Handling Advice: Avoid freeze-thaw cycles.

Storage: -20 °C, -80 °C

Storage Comment: Aliquot and store at -20°C or -80°C. Avoid freeze-thaw cycles.



Immunohistochemistry

Image 1. Anti-BMP6 antibody IHC staining of human small intestine. Immunohistochemistry of formalin-fixed, paraffin-embedded tissue after heat-induced antigen retrieval. Antibody concentration 20 ug/ml. This image was taken for the unconjugated form of this ...