



[Go to Product page](#)

Datasheet for ABIN1958042
anti-CCL24 antibody (HRP)

1 Image

Overview

Quantity:	100 µg
Target:	CCL24
Reactivity:	Human
Host:	Rabbit
Clonality:	Polyclonal
Conjugate:	This CCL24 antibody is conjugated to HRP
Application:	ELISA, Immunohistochemistry (IHC), Immunohistochemistry (Paraffin-embedded Sections) (IHC (p))

Product Details

Immunogen:	Recombinant human C-C motif chemokine 24 protein. Type of Immunogen: Recombinant protein
Isotype:	IgG
Specificity:	Human CCL24 / Eotax 2
Purification:	Caprylic acid and ammonium sulfate precipitation

Target Details

Target:	CCL24
Alternative Name:	CCL24 / Eotaxin 2 (CCL24 Products)
Background:	Name/Gene ID: CCL24

Target Details

Subfamily: Intercrine beta

Family: Intercrine

Synonyms: CCL24, C-C motif chemokine 24, Ckb-6, CK-beta-6, Eotaxin2, MPIF-2, MPIF2, SCYA24, Small-inducible cytokine A24, Eotaxin-2

Gene ID: 6369

Pathways: [Regulation of Actin Filament Polymerization](#)

Application Details

Application Notes: Approved: ELISA, IHC, IHC-P

Usage: The applications listed have been tested for the unconjugated form of this product.
Other forms have not been tested.

Comment: Target Species of Antibody: Human

Restrictions: For Research Use only

Handling

Format: Liquid

Concentration: Lot specific

Buffer: PBS, pH 7.4, 0.03 % Proclin 300, 50 % glycerol.

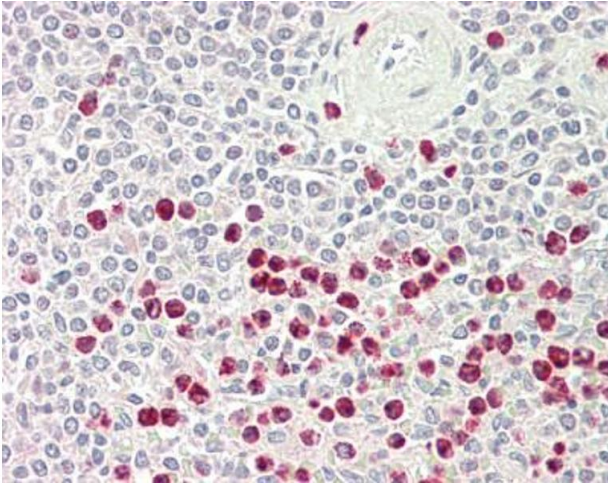
Preservative: ProClin

Precaution of Use: This product contains ProClin: a POISONOUS AND HAZARDOUS SUBSTANCE which should be handled by trained staff only.

Handling Advice: Avoid freeze-thaw cycles.

Storage: -20 °C, -80 °C

Storage Comment: Aliquot and store at -20°C or -80°C. Avoid freeze-thaw cycles.



Immunohistochemistry (Paraffin-embedded Sections)

Image 1. Human Spleen: Formalin-Fixed, Paraffin-Embedded (FFPE). This image was taken for the unconjugated form of this product. Other forms have not been tested.