



[Go to Product page](#)

Datasheet for ABIN1958117
anti-GDI2 antibody (HRP)

1 Image

Overview

Quantity:	100 µg
Target:	GDI2
Reactivity:	Human
Host:	Rabbit
Clonality:	Polyclonal
Conjugate:	This GDI2 antibody is conjugated to HRP
Application:	Western Blotting (WB), ELISA, Immunohistochemistry (IHC), Immunohistochemistry (Paraffin-embedded Sections) (IHC (p))

Product Details

Immunogen:	Recombinant human Rab GDP dissociation inhibitor beta protein. Type of Immunogen: Recombinant protein
Isotype:	IgG
Specificity:	Human GDI2
Purification:	Caprylic acid and ammonium sulfate precipitation

Target Details

Target:	GDI2
Alternative Name:	GDI2 (GDI2 Products)
Background:	Name/Gene ID: GDI2

Target Details

Synonyms: GDI2, GDP dissociation inhibitor 2, GDI-2, Rab GDI beta, RABGDIB

Gene ID: 2665

Application Details

Application Notes: Approved: ELISA, IHC, IHC-P, WB

Usage: The applications listed have been tested for the unconjugated form of this product.
Other forms have not been tested.

Comment: Target Species of Antibody: Human

Restrictions: For Research Use only

Handling

Format: Liquid

Concentration: Lot specific

Buffer: PBS, pH 7.4, 0.03 % Proclin 300, 50 % glycerol.

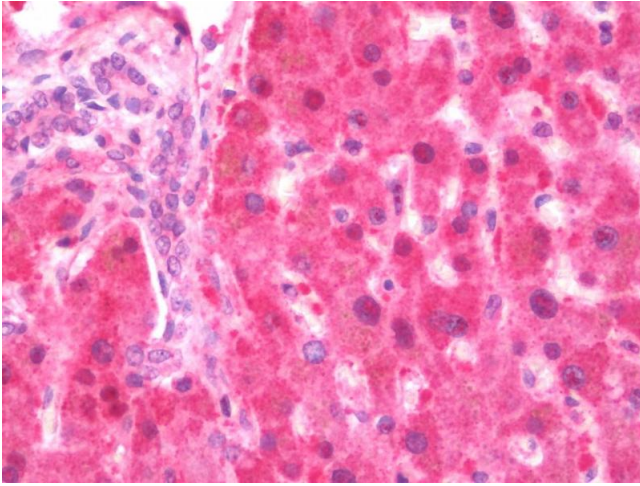
Preservative: ProClin

Precaution of Use: This product contains ProClin: a POISONOUS AND HAZARDOUS SUBSTANCE which should be handled by trained staff only.

Handling Advice: Avoid freeze-thaw cycles.

Storage: -20 °C,-80 °C

Storage Comment: Aliquot and store at -20°C or -80°C. Avoid freeze-thaw cycles.



Immunohistochemistry

Image 1. Anti-GDI2 antibody IHC staining of human liver. Immunohistochemistry of formalin-fixed, paraffin-embedded tissue after heat-induced antigen retrieval. Antibody concentration 10 ug/ml. This image was taken for the unconjugated form of this product. O ...