

Datasheet for ABIN1958274  
**anti-Transgelin antibody (HRP)**



[Go to Product page](#)

1 Image

## Overview

Quantity:	100 µg
Target:	Transgelin (TAGLN)
Reactivity:	Human
Host:	Rabbit
Clonality:	Polyclonal
Conjugate:	This Transgelin antibody is conjugated to HRP
Application:	Western Blotting (WB), ELISA, Immunohistochemistry (IHC), Immunohistochemistry (Paraffin-embedded Sections) (IHC (p))

## Product Details

Immunogen:	Recombinant human Transgelin protein.  Type of Immunogen: Recombinant protein
Isotype:	IgG
Specificity:	Human TAGLN / Transgelin / SM22
Purification:	Caprylic acid and ammonium sulfate precipitation

## Target Details

Target:	Transgelin (TAGLN)
Alternative Name:	TAGLN / Transgelin / SM22 ( <a href="#">TAGLN Products</a> )
Background:	Name/Gene ID: TAGLN

## Target Details

---

Synonyms: TAGLN, 22 kDa actin-binding protein, SMCC, TAGLN1, WS3-10, Transgelin, Transgelin variant 2, SM22, Protein WS3-10, SM22-alpha

Gene ID: 6876

## Application Details

---

Application Notes: Approved: ELISA, IHC, IHC-P, WB

Usage: The applications listed have been tested for the unconjugated form of this product. Other forms have not been tested.

Comment: Target Species of Antibody: Human

Restrictions: For Research Use only

## Handling

---

Format: Liquid

Concentration: Lot specific

Buffer: PBS, pH 7.4, 0.03 % Proclin 300, 50 % glycerol.

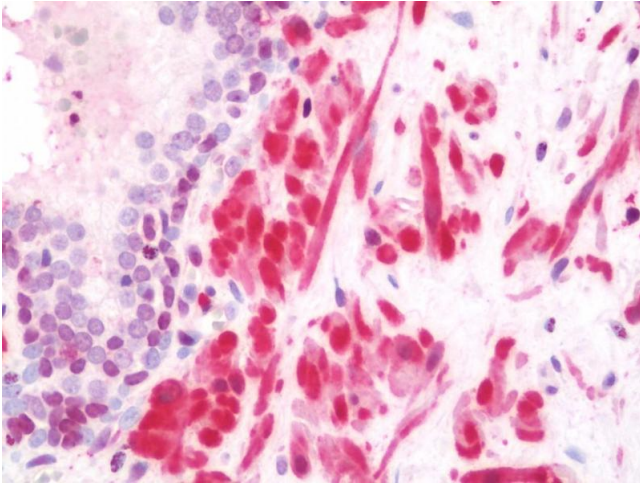
Preservative: ProClin

Precaution of Use: This product contains ProClin: a POISONOUS AND HAZARDOUS SUBSTANCE which should be handled by trained staff only.

Handling Advice: Avoid freeze-thaw cycles.

Storage: -20 °C, -80 °C

Storage Comment: Aliquot and store at -20°C or -80°C. Avoid freeze-thaw cycles.



### Immunohistochemistry

**Image 1.** Anti-TAGLN / Transgelin / SM22 antibody IHC staining of human prostate. Immunohistochemistry of formalin-fixed, paraffin-embedded tissue after heat-induced antigen retrieval. Antibody concentration 10 ug/ml. This image was taken for the unconjugated ...