

Datasheet for ABIN1959742  
**anti-FABP4 antibody (Tyr20)**

## 2 Images

[Go to Product page](#)

## Overview

Quantity:	200 µL
Target:	FABP4
Binding Specificity:	Tyr20
Reactivity:	Human, Mouse
Host:	Rabbit
Clonality:	Polyclonal
Conjugate:	This FABP4 antibody is un-conjugated
Application:	Western Blotting (WB), Immunohistochemistry (IHC), Immunohistochemistry (Paraffin-embedded Sections) (IHC (p))

## Product Details

Brand:	IHC-plus™
Specificity:	This FABP4 antibody is generated from rabbits immunized with a KLH conjugated synthetic peptide between 1-30 amino acids from human FABP4.
Purification:	Protein A purified

## Target Details

Target:	FABP4
Alternative Name:	FABP4 / AP2 ( <a href="#">FABP4 Products</a> )
Background:	Name/Gene ID: FABP4

## Target Details

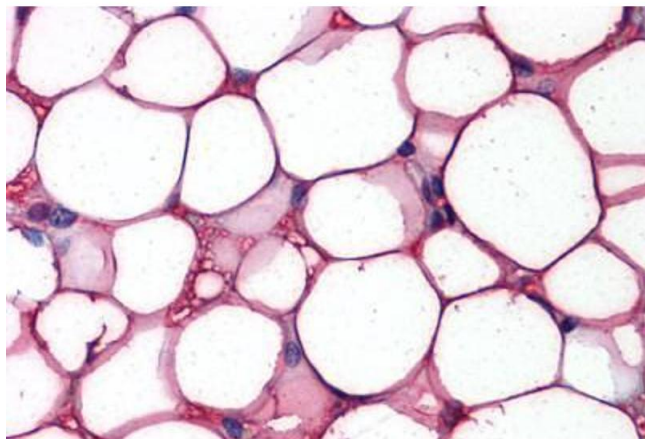
	Synonyms: FABP4, A-FABP, AFABP, ALBP, AP2, Fatty acid-binding protein 4
Gene ID:	2167
UniProt:	<a href="#">P15090</a>
Pathways:	<a href="#">Brown Fat Cell Differentiation</a>

## Application Details

Application Notes:	Approved: IHC, IHC-P (5 µg/mL), WB (1:1000)  Usage: Please note that cross-reactivity of this antibody with mouse protein has been confirmed in WB only. The antibody has not been evaluated for use in IHC with mouse samples at this time.
Comment:	Target Species of Antibody: Human
Restrictions:	For Research Use only

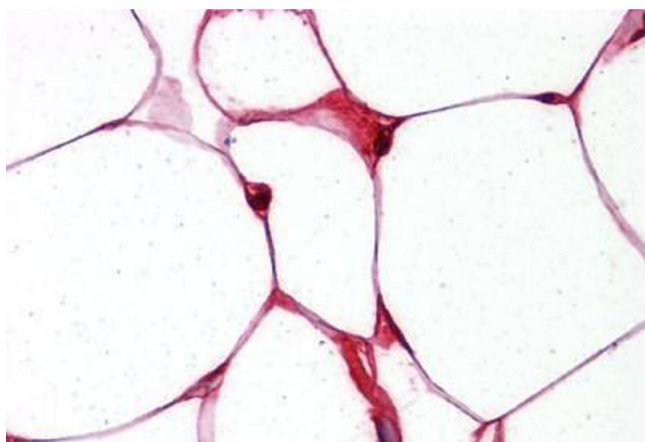
## Handling

Format:	Liquid
Concentration:	Lot specific
Buffer:	PBS, 0.09 % sodium azide
Preservative:	Sodium azide
Precaution of Use:	This product contains Sodium azide: a POISONOUS AND HAZARDOUS SUBSTANCE which should be handled by trained staff only.
Storage:	4 °C, -20 °C
Storage Comment:	Maintain refrigerated at 2-8°C for up to 6 months. For long term storage store at -20°C.
Expiry Date:	6 months



**Immunohistochemistry (Formalin-fixed Paraffin-embedded Sections)**

**Image 1.** Adipocytes, Human: Formalin-Fixed, Paraffin-Embedded (FFPE)



**Immunohistochemistry (Formalin-fixed Paraffin-embedded Sections)**

**Image 2.** Adipocytes, Human: Formalin-Fixed, Paraffin-Embedded (FFPE)