

Datasheet for ABIN1959903
anti-ATG4B antibody



[Go to Product page](#)

2 Images

Overview

| | |
|--------------|--|
| Quantity: | 200 µL |
| Target: | ATG4B |
| Reactivity: | Human |
| Host: | Mouse |
| Clonality: | Monoclonal |
| Conjugate: | This ATG4B antibody is un-conjugated |
| Application: | Western Blotting (WB), Immunohistochemistry (IHC), Immunohistochemistry (Paraffin-embedded Sections) (IHC (p)) |

Product Details

| | |
|---------------|--------------------------|
| Brand: | IHC-plus™ |
| Isotype: | IgM |
| Purification: | Euglobulin precipitation |

Target Details

| | |
|-------------------|---|
| Target: | ATG4B |
| Alternative Name: | APG4B / ATG4B (ATG4B Products) |
| Background: | Name/Gene ID: ATG4B Synonyms: ATG4B, APG4 autophagy 4 homolog B, AUTL1, Autophagin-1, Cysteine protease ATG4B, HAPG4B, APG4B, KIAA0943 |

Target Details

Gene ID: 23192

Pathways: [Autophagy](#)

Application Details

Application Notes: Approved: IHC, IHC-P (1:50), WB (1:100 - 1:250)

Comment: Target Species of Antibody: Human

Restrictions: For Research Use only

Handling

Format: Liquid

Concentration: Lot specific

Buffer: PBS, 0.09 % sodium azide

Preservative: Sodium azide

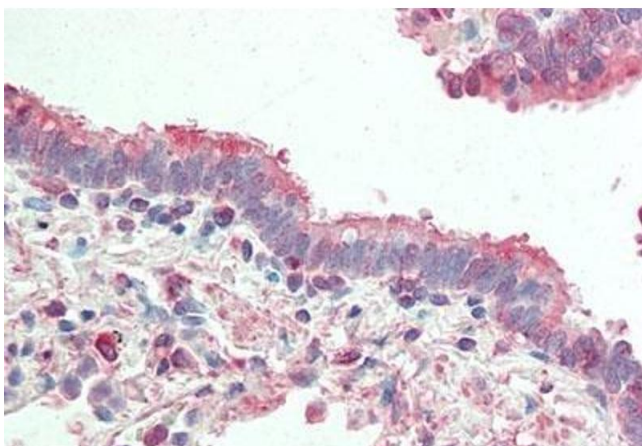
Precaution of Use: This product contains Sodium azide: a POISONOUS AND HAZARDOUS SUBSTANCE which should be handled by trained staff only.

Storage: 4 °C, -20 °C

Storage Comment: Maintain refrigerated at 2-8°C for up to 6 months. For long term storage store at -20°C.

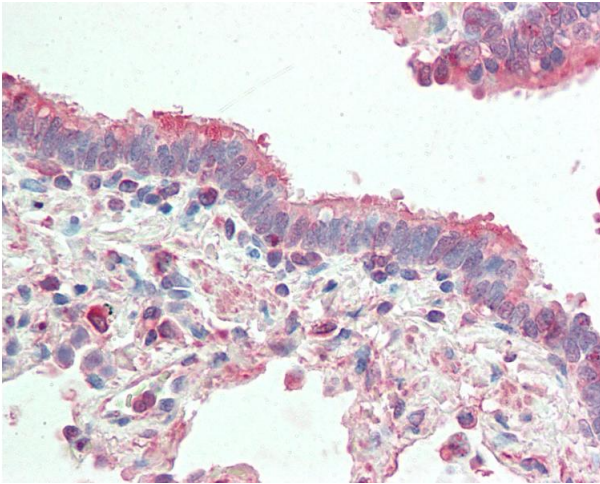
Expiry Date: 6 months

Images



Immunohistochemistry

Image 1. Human Lung, Respiratory Epithelium: Formalin-Fixed, Paraffin-Embedded (FFPE)



Immunohistochemistry

Image 2. Anti-APG4B / ATG4B antibody IHC staining of human lung, respiratory epithelium. Immunohistochemistry of formalin-fixed, paraffin-embedded tissue after heat-induced antigen retrieval. Antibody dilution 1:50.