



[Go to Product page](#)

Datasheet for ABIN1960031

anti-C1S antibody

1 Image

Overview

Quantity:	50 µL
Target:	C1S
Reactivity:	Human, Rat, Mouse, Monkey
Host:	Mouse
Clonality:	Monoclonal
Conjugate:	This C1S antibody is un-conjugated
Application:	Western Blotting (WB), Immunohistochemistry (IHC), Immunohistochemistry (Paraffin-embedded Sections) (IHC (p))

Product Details

Brand:	IHC-plus™
Immunogen:	Full length human recombinant protein of human C1S(NP_001725) produced in HEK293T cell. Type of Immunogen: Recombinant protein
Clone:	2A8
Isotype:	IgG2a
Specificity:	Human ComplementC1S
Purification:	Protein A/G purified

Target Details

Target:	C1S
---------	-----

Target Details

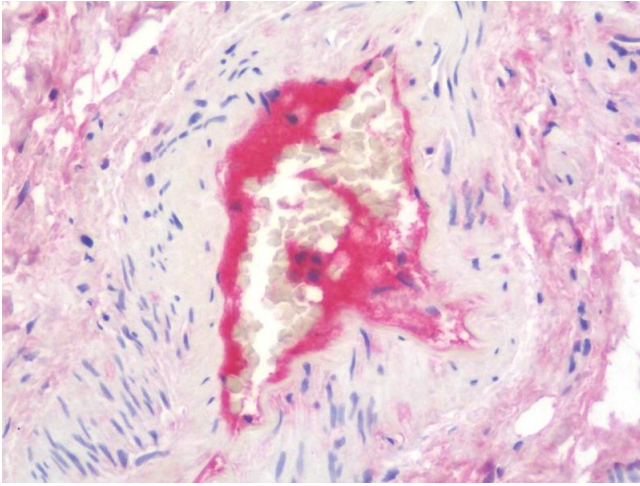
Alternative Name:	Complement C1s (C1S Products)
Background:	Name/Gene ID: C1S Subfamily: Serine S1 Family: Protease Synonyms: C1S, C1 esterase, ComplementC1S, Complement 1s, Complement C1s subcomponent
Gene ID:	716
NCBI Accession:	NP_001725
Pathways:	Complement System

Application Details

Application Notes:	Approved: IHC, IHC-P (10 µg/mL), WB (1:2000)
Comment:	Target Species of Antibody: Human
Restrictions:	For Research Use only

Handling

Format:	Liquid
Concentration:	Lot specific
Buffer:	PBS, pH 7.3, 1 % BSA, 50 % glycerol, 0.02 % sodium azide
Preservative:	Sodium azide
Precaution of Use:	This product contains Sodium azide: a POISONOUS AND HAZARDOUS SUBSTANCE which should be handled by trained staff only.
Handling Advice:	Minimize freezing and thawing.
Storage:	-20 °C
Storage Comment:	Store at -20°C. Avoid freeze-thaw cycles.



Immunohistochemistry

Image 1. Anti-Complement C1s antibody IHC staining of human small intestine. Immunohistochemistry of formalin-fixed, paraffin-embedded tissue after heat-induced antigen retrieval. Antibody concentration 10 ug/ml.