

Datasheet for ABIN1960036
anti-CTH antibody



[Go to Product page](#)

1 Image

Overview

Quantity:	50 µL
Target:	CTH
Reactivity:	Human, Dog, Monkey
Host:	Mouse
Clonality:	Monoclonal
Conjugate:	This CTH antibody is un-conjugated
Application:	Western Blotting (WB), Immunohistochemistry (IHC), Immunohistochemistry (Paraffin-embedded Sections) (IHC (p))

Product Details

Brand:	IHC-plus™
Immunogen:	Full length human recombinant protein of human CTH (NP_001893) produced in HEK293T cell. Type of Immunogen: Recombinant protein
Clone:	2D6
Isotype:	IgG1
Specificity:	Human CTH
Purification:	Protein A/G purified

Target Details

Target:	CTH
---------	-----

Target Details

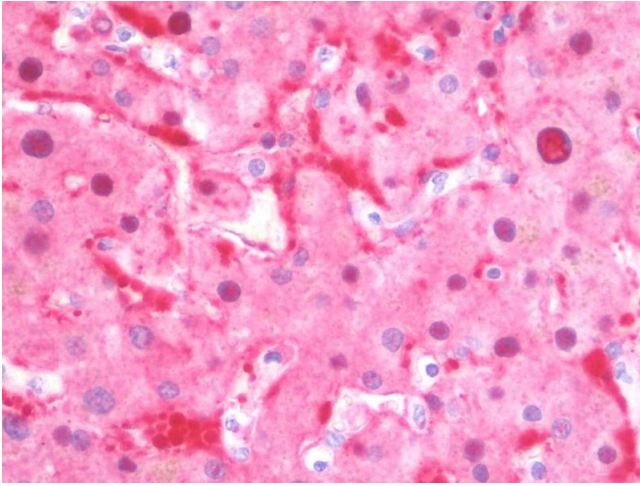
Alternative Name:	CTH (CTH Products)
Background:	Name/Gene ID: CTH Synonyms: CTH, Cysteine-protein sulfhydrase, Cysteine desulfhydrase, Cystathionine gamma-lyase, Homoserine dehydratase, Gamma-cystathionase, Homoserine deaminase
Gene ID:	1491
NCBI Accession:	NP_001893
Pathways:	ER-Nucleus Signaling , Warburg Effect

Application Details

Application Notes:	Approved: IHC, IHC-P (10 µg/mL), WB (1:200 - 1:500)
Comment:	Target Species of Antibody: Human
Restrictions:	For Research Use only

Handling

Format:	Liquid
Concentration:	Lot specific
Buffer:	PBS, pH 7.3, 1 % BSA, 50 % glycerol, 0.02 % sodium azide
Preservative:	Sodium azide
Precaution of Use:	This product contains Sodium azide: a POISONOUS AND HAZARDOUS SUBSTANCE which should be handled by trained staff only.
Handling Advice:	Minimize freezing and thawing.
Storage:	-20 °C
Storage Comment:	Store at -20°C. Avoid freeze-thaw cycles.



Immunohistochemistry

Image 1. Anti-CTH antibody IHC staining of human liver. Immunohistochemistry of formalin-fixed, paraffin-embedded tissue after heat-induced antigen retrieval. Antibody concentration 10 ug/ml.