

Datasheet for ABIN1960045  
**anti-FBLN3 antibody**



[Go to Product page](#)

1 Image

## Overview

Quantity:	50 µL
Target:	FBLN3
Reactivity:	Human
Host:	Mouse
Clonality:	Monoclonal
Conjugate:	This FBLN3 antibody is un-conjugated
Application:	Western Blotting (WB), Immunohistochemistry (IHC), Flow Cytometry (FACS), Immunohistochemistry (Paraffin-embedded Sections) (IHC (p))

## Product Details

Brand:	IHC-plus™
Immunogen:	Full length human recombinant protein of human EFEMP1(NP_004096) produced in HEK293T cell.  Type of Immunogen: Recombinant protein
Clone:	1D9
Isotype:	IgG2a
Specificity:	Human Fibulin-3 / EFEMP1
Purification:	Protein A/G purified

## Target Details

---

Target:	FBLN3
Alternative Name:	Fibulin-3 / EFEMP1 ( <a href="#">FBLN3 Products</a> )
Background:	Name/Gene ID: EFEMP1  Synonyms: EFEMP1, DHRD, Extracellular protein S1-5, FBNL, FBLN3, Fibrillin-like protein, Fibrillin-like, MLVT, S1-5, MTLV, DRAD, FIBL-3, Fibulin-3
Gene ID:	2202
NCBI Accession:	<a href="#">NP_004096</a>
Pathways:	<a href="#">EGFR Signaling Pathway</a>

## Application Details

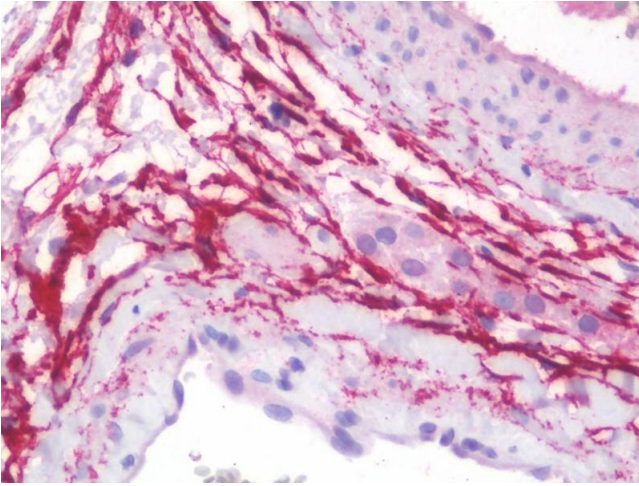
---

Application Notes:	Approved: Flo (1:100), IHC, IHC-P (10 µg/mL), WB (1:200 - 1:500)
Comment:	Target Species of Antibody: Human
Restrictions:	For Research Use only

## Handling

---

Format:	Liquid
Concentration:	Lot specific
Buffer:	PBS, pH 7.3, 1 % BSA, 50 % glycerol, 0.02 % sodium azide. Sourced from ascites.
Preservative:	Sodium azide
Precaution of Use:	This product contains Sodium azide: a POISONOUS AND HAZARDOUS SUBSTANCE which should be handled by trained staff only.
Handling Advice:	Minimize freezing and thawing.
Storage:	-20 °C
Storage Comment:	Store at -20°C. Avoid freeze-thaw cycles.



### Immunohistochemistry

**Image 1.** Anti-Fibulin-3 / EFEMP1 antibody IHC staining of human testis. Immunohistochemistry of formalin-fixed, paraffin-embedded tissue after heat-induced antigen retrieval. Antibody concentration 10 ug/ml.