

Datasheet for ABIN1960051 **anti-HAND1 antibody**



[Go to Product page](#)

1 Image

Overview

Quantity:	50 µL
Target:	HAND1
Reactivity:	Human
Host:	Mouse
Clonality:	Monoclonal
Conjugate:	This HAND1 antibody is un-conjugated
Application:	Western Blotting (WB), Immunohistochemistry (IHC), Immunofluorescence (IF), Flow Cytometry (FACS), Immunohistochemistry (Paraffin-embedded Sections) (IHC (p))

Product Details

Brand:	IHC-plus™
Immunogen:	Full length human recombinant protein of human HAND1 (NP_004812) produced in E. coli. Type of Immunogen: Recombinant protein
Clone:	1G10
Isotype:	IgG2b
Specificity:	Human HAND1
Purification:	Protein A/G purified

Target Details

Target:	HAND1
---------	-------

Target Details

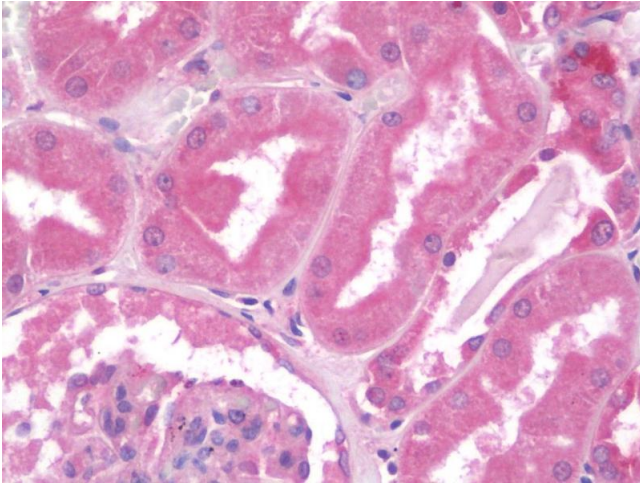
Alternative Name:	HAND1 (HAND1 Products)
Background:	Name/Gene ID: HAND1 Family: Transcription factor Synonyms: HAND1, EHand, Hxt, BHLHa27, Thing1
Gene ID:	9421
NCBI Accession:	NP_004812
Pathways:	Tube Formation

Application Details

Application Notes:	Approved: Flo (1:100), IF (1:100), IHC, IHC-P (10 µg/mL), WB (1:500)
Comment:	Target Species of Antibody: Human
Restrictions:	For Research Use only

Handling

Format:	Liquid
Concentration:	Lot specific
Buffer:	PBS, pH 7.3, 1 % BSA, 50 % glycerol, 0.02 % sodium azide
Preservative:	Sodium azide
Precaution of Use:	This product contains Sodium azide: a POISONOUS AND HAZARDOUS SUBSTANCE which should be handled by trained staff only.
Handling Advice:	Minimize freezing and thawing.
Storage:	-20 °C
Storage Comment:	Store at -20°C. Avoid freeze-thaw cycles.



Immunohistochemistry

Image 1. Anti-HAND1 antibody IHC staining of human kidney. Immunohistochemistry of formalin-fixed, paraffin-embedded tissue after heat-induced antigen retrieval. Antibody concentration 10 ug/ml.