

Datasheet for ABIN1960098
anti-TAF15 antibody



[Go to Product page](#)

3 Images

Overview

Quantity:	50 µL
Target:	TAF15
Reactivity:	Human
Host:	Mouse
Clonality:	Monoclonal
Conjugate:	This TAF15 antibody is un-conjugated
Application:	Western Blotting (WB), Immunohistochemistry (IHC), Immunofluorescence (IF), Immunohistochemistry (Paraffin-embedded Sections) (IHC (p))

Product Details

Brand:	IHC-plus™
Immunogen:	MCA-4D71 was generated against full length recombinant human TAF15 expressed in and purified from E. coli. Type of Immunogen: Recombinant protein
Clone:	4D71
Isotype:	IgG1 kappa
Specificity:	Clone 4D71 recognizes TAF15 specifically both in western blots and in immunocytochemical experiments. On blots clone 4D71 reveals a prominent 68 kDa band, and on cells in tissue culture the antibody stains mainly in nucleus.
Purification:	Protein G purified

Target Details

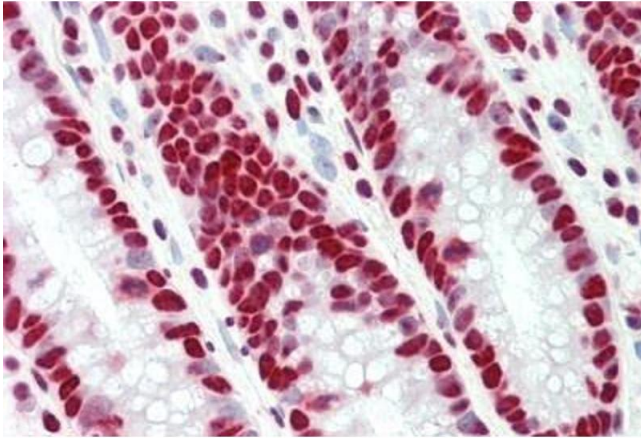
Target:	TAF15
Alternative Name:	TAF15 (TAF15 Products)
Background:	Name/Gene ID: TAF15 Synonyms: TAF15, RBP56, RBP56/CSMF fusion, RNA-binding protein 56, TAFII68, TAF2N, TBP-associated factor 15, HTAFII68, TAF(II)68
Gene ID:	8148

Application Details

Application Notes:	Approved: IF (1:500 - 1:1000), IHC, IHC-P (10 µg/mL), WB (1:1000) Usage: The antibody solution can be used at dilutions of 1:500-1:1000 for immunofluorescence. .For western blots try at 1:1000. A suitable control tissue is HeLa cell lysates.
Comment:	Target Species of Antibody: Human
Restrictions:	For Research Use only

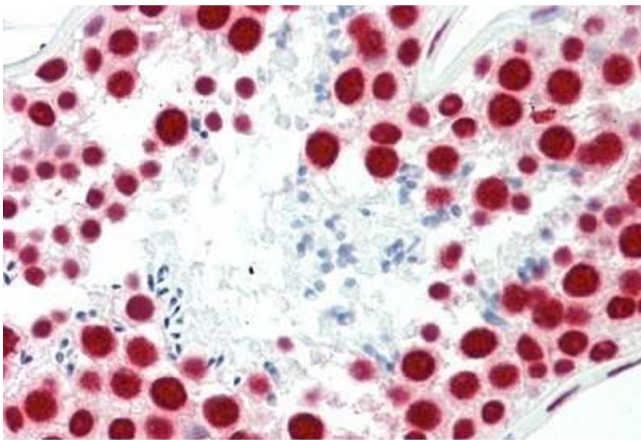
Handling

Format:	Liquid
Concentration:	Lot specific
Buffer:	PBS, 0.05 % sodium azide.
Preservative:	Sodium azide
Precaution of Use:	This product contains Sodium azide: a POISONOUS AND HAZARDOUS SUBSTANCE which should be handled by trained staff only.
Handling Advice:	Avoid repeated freezing and thawing.
Storage:	4 °C, -20 °C
Storage Comment:	4°C or -20°C, Avoid freeze-thaw cycles.



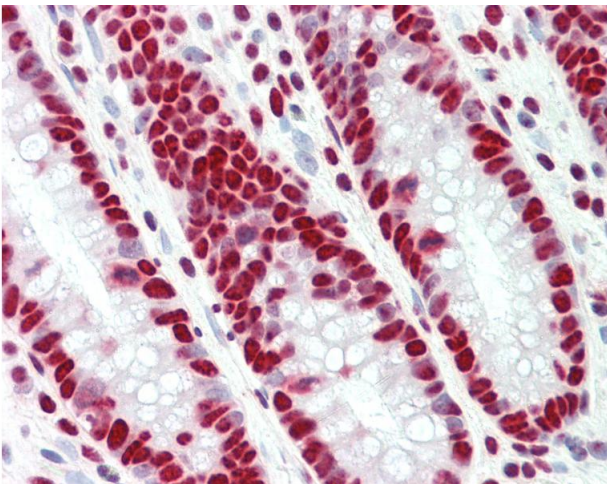
Immunohistochemistry

Image 1. Human Colon: Formalin-Fixed, Paraffin-Embedded (FFPE)



Immunohistochemistry

Image 2. Human Testis: Formalin-Fixed, Paraffin-Embedded (FFPE)



Immunohistochemistry

Image 3. Anti-TAF15 antibody IHC staining of human colon. Immunohistochemistry of formalin-fixed, paraffin-embedded tissue after heat-induced antigen retrieval. Antibody concentration 10 ug/ml.