



[Go to Product page](#)

Datasheet for ABIN1960137

## anti-Lamin B2 antibody (C-Term)

### 1 Image

#### Overview

Quantity:	0.05 mg
Target:	Lamin B2 (LMNB2)
Binding Specificity:	C-Term
Reactivity:	Human, Mouse, Zebrafish (Danio rerio), Xenopus laevis, Hamster, Pig
Host:	Mouse
Clonality:	Monoclonal
Conjugate:	This Lamin B2 antibody is un-conjugated
Application:	Western Blotting (WB), Immunohistochemistry (IHC), Immunofluorescence (IF), Flow Cytometry (FACS), Immunohistochemistry (Frozen Sections) (IHC (fro))

#### Product Details

Brand:	IHC-plus™
Immunogen:	Detergent insoluble fraction of potoroo cell line PtK1
Clone:	LN43
Isotype:	IgG1
Specificity:	Reacts with an epitope located in the C-terminal part of lamin B2.
Purification:	Protein G purified

#### Target Details

Target:	Lamin B2 (LMNB2)
---------	------------------

## Target Details

---

Alternative Name:	Lamin B2 ( <a href="#">LMNB2 Products</a> )
Background:	Name/Gene ID: LMNB2  Synonyms: LMNB2, Lamin B2, Lamin-B2, LMN2
Gene ID:	84823
Pathways:	<a href="#">Apoptosis</a> , <a href="#">Caspase Cascade in Apoptosis</a>

## Application Details

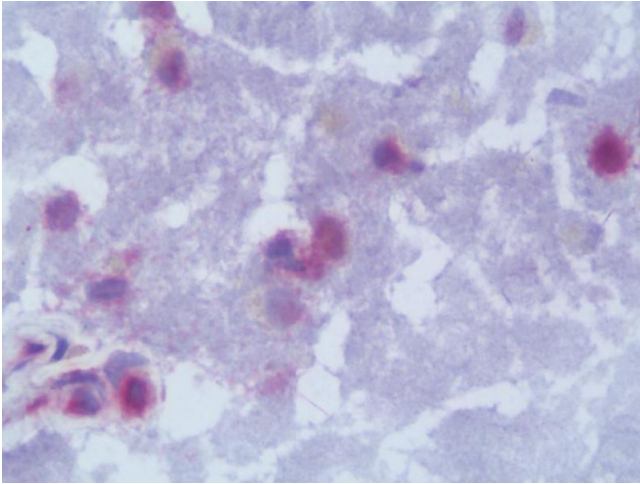
---

Application Notes:	Approved: Flo (1:100 - 1:200), IF (1:100), IHC, IHC-Fr (1:100), WB (1:100 - 1:1000)  Not recommended for: IHC-P
Comment:	Target Species of Antibody: Human
Restrictions:	For Research Use only

## Handling

---

Format:	Liquid
Concentration:	Lot specific
Buffer:	PBS containing 0.09 % sodium azide
Preservative:	Sodium azide
Precaution of Use:	This product contains Sodium azide: a POISONOUS AND HAZARDOUS SUBSTANCE which should be handled by trained staff only.
Handling Advice:	avoid freeze thaw cycles
Storage:	4 °C,-20 °C
Storage Comment:	Short term 4°C, long term aliquot and store at -20°C, avoid freeze-thaw cycles. Store undiluted.



### Immunohistochemistry

**Image 1.** IHC with Lamin B2 antibody on frozen human brain.