

Datasheet for ABIN1960143

anti-NEFM antibody[Go to Product page](#)**1** Image

Overview

Quantity:	100 µL
Target:	NEFM
Reactivity:	Human
Host:	Chicken
Clonality:	Polyclonal
Conjugate:	This NEFM antibody is un-conjugated
Application:	Western Blotting (WB), Immunofluorescence (IF), Immunocytochemistry (ICC)

Product Details

Isotype:	IgY
Purification:	Purified

Target Details

Target:	NEFM
Alternative Name:	NEFM / NF-M (NEFM Products)
Background:	Name/Gene ID: NEFM Synonyms: NEFM, 160 kDa neurofilament protein, NEF3, NF-M, NFM, Neurofilament 3
Gene ID:	4741
Pathways:	Brown Fat Cell Differentiation

Application Details

Application Notes: Approved: ICC (1:2000), IF (1:2000), WB (1:10000)

Usage: The IgY solution can be used at dilutions of at least 1:2000 in immunofluorescence experiments. In western blotting using chemiluminescence it can be used at dilutions of 1:10000 or lower.

Comment: Target Species of Antibody: Human

Restrictions: For Research Use only

Handling

Format: Liquid

Concentration: Lot specific

Buffer: PBS, 10 mM sodium azide.

Preservative: Sodium azide

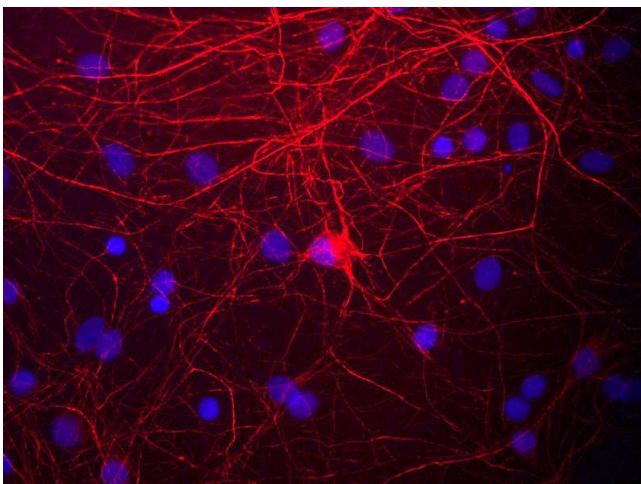
Precaution of Use: This product contains Sodium azide: a POISONOUS AND HAZARDOUS SUBSTANCE which should be handled by trained staff only.

Handling Advice: Avoid repeated freezing and thawing.

Storage: 4 °C, -20 °C

Storage Comment: 4°C or -20°C, Avoid freeze-thaw cycles.

Images



Immunocytochemistry

Image 1. View of mixed neuron/glia cultures stained with NEFM / NF-M antibody (red). The NF-M protein is assembled into neurofilaments which are found throughout the axons, dendrites and perikarya of these cells.