

Datasheet for ABIN1960176
anti-IKKi/IKKe antibody (AA 123-636)



[Go to Product page](#)

1 Image

Overview

Quantity:	50 µL
Target:	IKKi/IKKe (IKBKE)
Binding Specificity:	AA 123-636
Reactivity:	Human
Host:	Rabbit
Clonality:	Polyclonal
Conjugate:	This IKKi/IKKe antibody is un-conjugated
Application:	Western Blotting (WB), Immunohistochemistry (IHC), Immunohistochemistry (Paraffin-embedded Sections) (IHC (p))

Product Details

Brand:	IHC-plus™
Immunogen:	Recombinant fragment corresponding to a region within amino acids 123 and 636 of IKBKE (SwissProt Q14164). Percent identity by BLAST analysis: Human (100%), Bovine (89%), Rat (86%), Mouse (85%). Type of Immunogen: Recombinant protein
Isotype:	IgG
Specificity:	Human IKBKE
Purification:	Immunoaffinity purified

Target Details

Target:	IKKi/IKKe (IKBKE)
Alternative Name:	IKBKE / IKKI / IKKE (IKBKE Products)
Background:	Name/Gene ID: IKBKE Subfamily: IKAPPAB Family: Protein Kinase Synonyms: IKBKE, Ikb kinase epsilon, IKK-E, IKK-epsilon, Inducible I kappa-B kinase, KIAA0151, IKK-i, IKK-related kinase epsilon, I-kappa-B kinase epsilon, IKKE, IKKepsilon, IKKI, Inducible I kappaB kinase
Gene ID:	9641
Pathways:	TLR Signaling , Activation of Innate immune Response , Hepatitis C , Toll-Like Receptors Cascades

Application Details

Application Notes:	Approved: IHC, IHC-P (7.5 µg/mL), WB (1:5000 - 1:20000) Usage: Suggested starting dilutions are as follows: Western blot: 1:5000-1:20000. IHC-Paraffin: 7.5 µg/mL. Not yet tested in other applications. Optimal working dilutions should be determined experimentally by the end user.
Comment:	Target Species of Antibody: Human
Restrictions:	For Research Use only

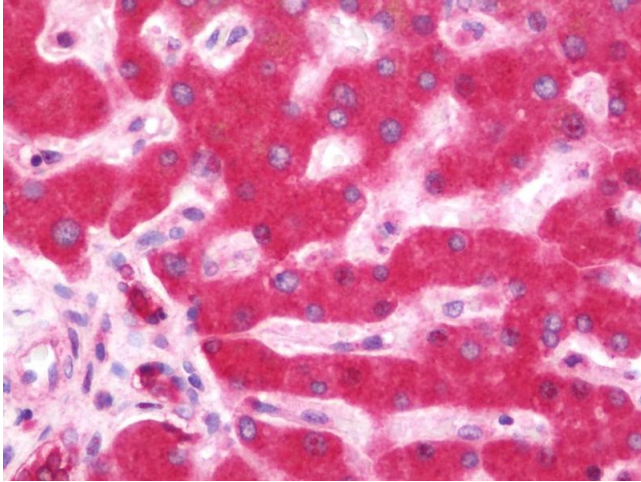
Handling

Format:	Liquid
Concentration:	Lot specific
Buffer:	PBS, pH 7, 1 % BSA, 20 % Glycerol, 0.01 % Thimerosal
Preservative:	Thimerosal (Merthiolate)
Precaution of Use:	This product contains Thimerosal (Merthiolate): a POISONOUS AND HAZARDOUS SUBSTANCE which should be handled by trained staff only.
Handling Advice:	Avoid freeze-thaw cycles.
Storage:	-20 °C

Handling

Storage Comment: Aliquot and freeze at -20°C. Avoid freeze-thaw cycles.

Images



Immunohistochemistry

Image 1. Anti-*IKBKE* / *IKKI* / *IKKE* antibody IHC staining of human liver. Immunohistochemistry of formalin-fixed, paraffin-embedded tissue after heat-induced antigen retrieval. Antibody concentration 7.5 µg/ml.