



Datasheet for ABIN1960179  
**anti-LRPAP1 antibody (AA 31-325)**



[Go to Product page](#)

1 Image

Overview

Quantity:	50 µL
Target:	LRPAP1
Binding Specificity:	AA 31-325
Reactivity:	Human
Host:	Rabbit
Clonality:	Polyclonal
Conjugate:	This LRPAP1 antibody is un-conjugated
Application:	Western Blotting (WB), Immunohistochemistry (IHC), Immunohistochemistry (Paraffin-embedded Sections) (IHC (p))

Product Details

Brand:	IHC-plus™
Immunogen:	Recombinant fragment corresponding to a region within amino acids 31 and 325 of RAP (SwissProt P30533). Percent identity by BLAST analysis:  Type of Immunogen: Recombinant protein
Isotype:	IgG
Specificity:	Human LRPAP1
Purification:	Immunoaffinity purified

## Target Details

---

Target: LRPAP1

Alternative Name: LRPAP1 ([LRPAP1 Products](#))

Background: Name/Gene ID: LRPAP1

Synonyms: LRPAP1, A2MRAP, Alpha-2-MRAP, A2RAP, HBP44, RAP

Gene ID: 4043

## Application Details

---

Application Notes: Approved: IHC, IHC-P (7.5 µg/mL), WB (1:500 - 1:3000)

Usage: Suggested starting dilutions are as follows: Western blot: 1:500-1:3000. IHC-Paraffin: 7.5 µg/mL. Not yet tested in other applications. Optimal working dilutions should be determined experimentally by the end user.

Comment: Target Species of Antibody: Human

Restrictions: For Research Use only

## Handling

---

Format: Liquid

Concentration: Lot specific

Buffer: PBS, pH 7, 1 % BSA, 20 % Glycerol, 0.01 % Thimerosal

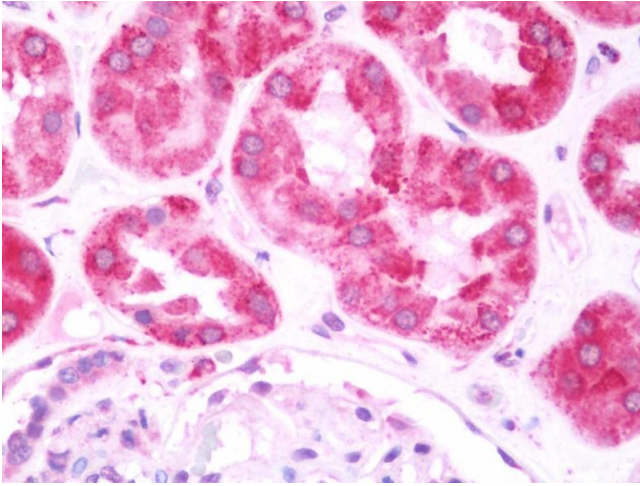
Preservative: Thimerosal (Merthiolate)

Precaution of Use: This product contains Thimerosal (Merthiolate): a POISONOUS AND HAZARDOUS SUBSTANCE which should be handled by trained staff only.

Handling Advice: Avoid freeze-thaw cycles.

Storage: -20 °C

Storage Comment: Aliquot and freeze at -20°C. Avoid freeze-thaw cycles.



### Immunohistochemistry

**Image 1.** Anti-LRPAP1 antibody IHC staining of human kidney. Immunohistochemistry of formalin-fixed, paraffin-embedded tissue after heat-induced antigen retrieval. Antibody concentration 7.5 ug/ml.