

Datasheet for ABIN1960180
anti-MTBP antibody (AA 23-350)[Go to Product page](#)

1 Image

Overview

Quantity:	50 µL
Target:	MTBP
Binding Specificity:	AA 23-350
Reactivity:	Human
Host:	Rabbit
Clonality:	Polyclonal
Conjugate:	This MTBP antibody is un-conjugated
Application:	Western Blotting (WB), Immunohistochemistry (IHC), Immunohistochemistry (Paraffin-embedded Sections) (IHC (p))

Product Details

Brand:	IHC-plus™
Immunogen:	Recombinant fragment corresponding to a region within amino acids 23 and 350 of MTBP (SwissProt Q96DY7). Percent identity by BLAST analysis: Human (100%), Bovine (89%), Mouse (81%). Type of Immunogen: Recombinant protein
Isotype:	IgG
Specificity:	Human MTBP
Purification:	Immunoaffinity purified

Target Details

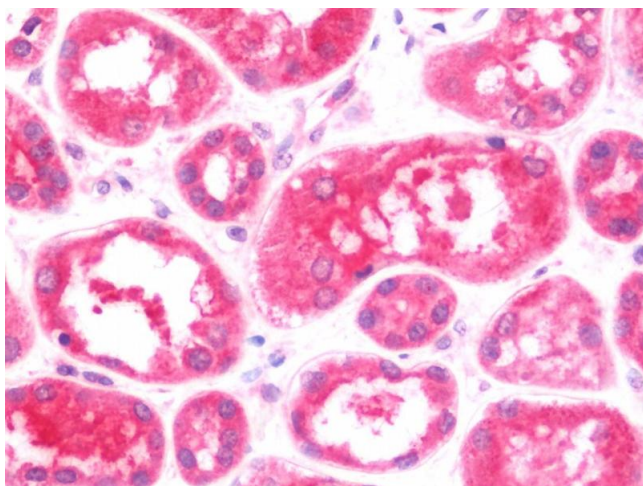
Target:	MTBP
Alternative Name:	MTBP (MTBP Products)
Background:	Name/Gene ID: MTBP Synonyms: MTBP, Mdm2-binding protein, MDM2BP, HMTBP
Gene ID:	27085

Application Details

Application Notes:	Approved: IHC, IHC-P (7.5 µg/mL), WB (1:500 - 1:3000) Usage: Suggested starting dilutions are as follows: Western blot: 1:500-1:3000. IHC-Paraffin: 7.5 µg/mL. Not yet tested in other applications. Optimal working dilutions should be determined experimentally by the end user.
Comment:	Target Species of Antibody: Human
Restrictions:	For Research Use only

Handling

Format:	Liquid
Concentration:	Lot specific
Buffer:	PBS, pH 7, 1 % BSA, 20 % Glycerol, 0.01 % Thimerosal
Preservative:	Thimerosal (Merthiolate)
Precaution of Use:	This product contains Thimerosal (Merthiolate): a POISONOUS AND HAZARDOUS SUBSTANCE which should be handled by trained staff only.
Handling Advice:	Avoid freeze-thaw cycles.
Storage:	-20 °C
Storage Comment:	Aliquot and freeze at -20°C. Avoid freeze-thaw cycles.



Immunohistochemistry

Image 1. Anti-MTBP antibody IHC staining of human kidney. Immunohistochemistry of formalin-fixed, paraffin-embedded tissue after heat-induced antigen retrieval. Antibody concentration 7.5 ug/ml.