

Datasheet for ABIN1960185  
**anti-STUB1 antibody (AA 17-303)**



[Go to Product page](#)

1 Image

## Overview

Quantity:	50 µL
Target:	STUB1
Binding Specificity:	AA 17-303
Reactivity:	Human
Host:	Rabbit
Clonality:	Polyclonal
Conjugate:	This STUB1 antibody is un-conjugated
Application:	Western Blotting (WB), Immunohistochemistry (IHC), Immunohistochemistry (Paraffin-embedded Sections) (IHC (p))

## Product Details

Brand:	IHC-plus™
Immunogen:	Recombinant fragment corresponding to a region within amino acids 17 and 303 of STUB1 (SwissProt Q9UNE7).  Type of Immunogen: Recombinant protein
Isotype:	IgG
Specificity:	Human STUB1
Purification:	Immunoaffinity purified

## Target Details

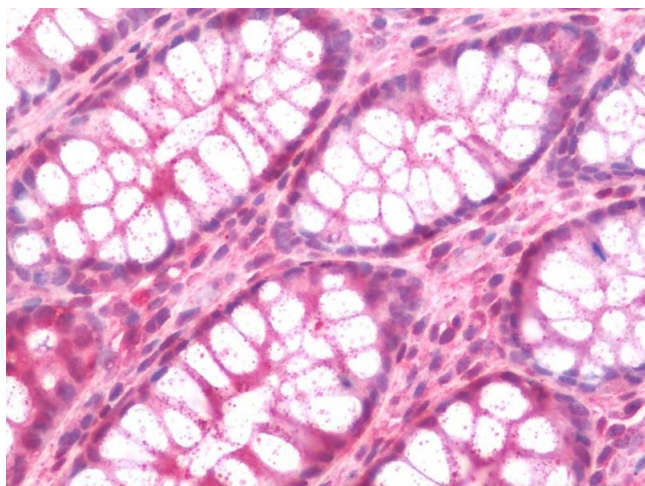
Target:	STUB1
Alternative Name:	STUB1 / CHIP ( <a href="#">STUB1 Products</a> )
Background:	Name/Gene ID: STUB1  Synonyms: STUB1, Antigen NY-CO-7, CHIP, HSPABP2, NY-CO-7, SDCCAG7, UBOX1, CLL-associated antigen KW-8
Gene ID:	10273
Pathways:	<a href="#">Regulation of Hormone Metabolic Process</a> , <a href="#">Response to Water Deprivation</a>

## Application Details

Application Notes:	Approved: IHC, IHC-P (7.5 µg/mL), WB (1:5000 - 1:20000)  Usage: Suggested starting dilutions are as follows: Western blot: 1:5000-1:20000, IHC-Paraffin: 7.5 µg/mL [suggested antigen retrieval using heat mediated 10 mM Citrate buffer ( pH 6.0) or Tris-EDTA buffer ( pH 8.0)]. Not yet tested in other applications. Optimal working dilutions should be determined experimentally by the end user.
Comment:	Target Species of Antibody: Human
Restrictions:	For Research Use only

## Handling

Format:	Liquid
Concentration:	Lot specific
Buffer:	PBS, pH 7, 1 % BSA, 20 % Glycerol, 0.01 % Thimerosal
Preservative:	Thimerosal (Merthiolate)
Precaution of Use:	This product contains Thimerosal (Merthiolate): a POISONOUS AND HAZARDOUS SUBSTANCE which should be handled by trained staff only.
Handling Advice:	Avoid multiple freeze-thaw cycles.
Storage:	-20 °C
Storage Comment:	Keep as concentrated solution. Aliquot and store at -20°C or below. Avoid multiple freeze-thaw cycles.



#### Immunohistochemistry

**Image 1.** Anti-STUB1 / CHIP antibody IHC staining of human colon. Immunohistochemistry of formalin-fixed, paraffin-embedded tissue after heat-induced antigen retrieval. Antibody concentration 7.5 ug/ml.