

Datasheet for ABIN1967138

**anti-LAMP1 antibody****3** Images[Go to Product page](#)

## Overview

Quantity:	0.05 mg
Target:	LAMP1
Reactivity:	Human, Mouse, Primate
Host:	Mouse
Clonality:	Monoclonal
Conjugate:	This LAMP1 antibody is un-conjugated
Application:	Western Blotting (WB), Flow Cytometry (FACS), Immunohistochemistry (IHC), Immunocytochemistry (ICC), Immunohistochemistry (Paraffin-embedded Sections) (IHC (p)), Immunohistochemistry (Frozen Sections) (IHC (fro))

## Product Details

Brand:	IHC-plus™
Immunogen:	Human PBMC.  Type of Immunogen: Cells
Clone:	H4A3
Isotype:	IgG1
Specificity:	Monoclonal antibody H4A3 recognizes CD107a, an approximately 100-120 kD glycoprotein expressed mainly on lysosomal, but also on the plasma membrane.
Purification:	Protein A purified
Sterility:	Sterile filtered

## Target Details

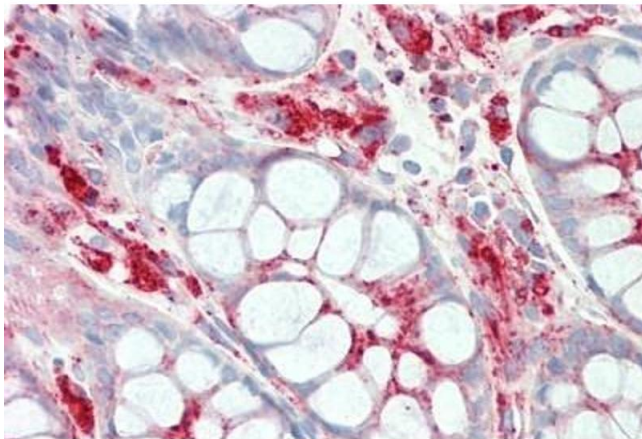
Target:	LAMP1
Alternative Name:	LAMP1 / CD107a ( <a href="#">LAMP1 Products</a> )
Background:	Name/Gene ID: LAMP1  Synonyms: LAMP1, CD107a, CD107a antigen, LAMP-1, LGP120, LAMPA
Gene ID:	3916
Pathways:	<a href="#">Autophagy</a>

## Application Details

Application Notes:	Approved: Flo, ICC (2 - 10 µg/mL), IHC, IHC-Fr, IHC-P (10 µg/mL), WB  Usage: Immunohistochemistry: This antibody was validated for use in immunohistochemistry on a panel of 21 formalin-fixed, paraffin-embedded (FFPE) human tissues after heat induced antigen retrieval in pH 6.0 citrate buffer. After incubation with the primary antibody The applications listed have been tested for the unmodified form of this product. Other forms have not been tested.
Comment:	Target Species of Antibody: Human
Restrictions:	For Research Use only

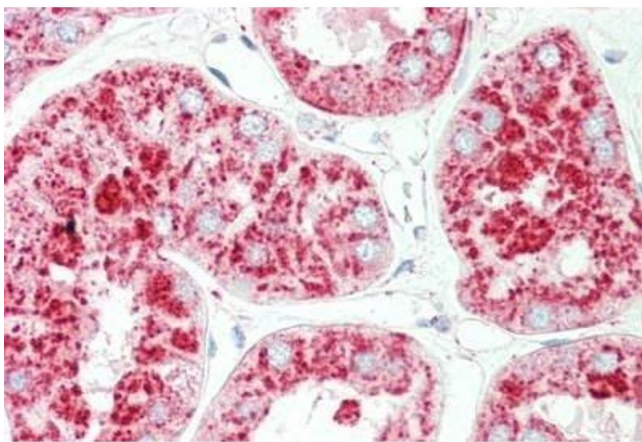
## Handling

Format:	Liquid
Concentration:	Lot specific
Buffer:	PBS, pH 7.4, sterile filtered.
Preservative:	Azide free
Handling Advice:	Do not freeze.
Storage:	4 °C
Storage Comment:	Store at 2-8°C. Do not freeze.



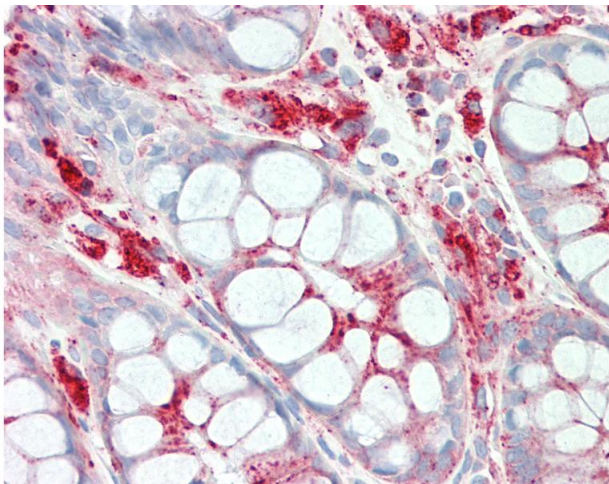
#### Immunohistochemistry

**Image 1.** Human Colon: Formalin-Fixed, Paraffin-Embedded (FFPE)



#### Immunohistochemistry

**Image 2.** Human Kidney: Formalin-Fixed, Paraffin-Embedded (FFPE)



#### Immunohistochemistry

**Image 3.** Anti-LAMP1 / CD107a antibody IHC staining of human colon. Immunohistochemistry of formalin-fixed, paraffin-embedded tissue after heat-induced antigen retrieval. This image was taken for the unmodified form of this product. Other forms have not been t ...