



[Go to Product page](#)

Datasheet for ABIN196794

## anti-NMDA 1 Receptor antibody (pSer896)

### 1 Image

#### Overview

Quantity:	0.1 mL
Target:	NMDA 1 Receptor (NMDA R1)
Binding Specificity:	pSer896
Reactivity:	Human, Mouse
Host:	Rabbit
Clonality:	Polyclonal
Conjugate:	This NMDA 1 Receptor antibody is un-conjugated
Application:	Western Blotting (WB)

#### Product Details

Immunogen:	The antiserum was produced against synthesized phosphopeptide derived from human NMDAR1 around the phosphorylation site of serine 896 (R-R-SP-S-K).
Specificity:	The antibody was affinity-purified from rabbit antiserum by affinity-chromatography using epitope-specific phosphopeptide. The antibody against non-phosphopeptide was removed by chromatography using non-phosphopeptide corresponding to the phosphorylation site. NMDAR1 (phospho-Ser896) antibody detects endogenous levels of NMDAR1 only when phosphorylated at serine 896.
Purification:	Immunoaffinity chromatography.

#### Target Details

Target:	NMDA 1 Receptor (NMDA R1)
---------	---------------------------

## Target Details

---

Alternative Name:	NMDA Receptor 1 ( <a href="#">NMDA R1 Products</a> )
Background:	NMDA receptor subtypes of glutamate-gated ion channels possesses high calcium permeability and voltage-dependent sensitivity to magnesium. NMDAR1 plays a key role in synaptic plasticity, synaptogenesis, excitotoxicity, memory acquisition and learning. It mediates neuronal functions in glutamate neurotransmission and is involved in the cell surface targeting of NMDA receptors. Synonyms: GRIN1, Glutamate [NMDA] receptor subunit zeta-1, NMDAR1
Gene ID:	2902
NCBI Accession:	<a href="#">NP_000823</a>
UniProt:	<a href="#">Q05586</a>

## Application Details

---

Application Notes:	Suitable for use in Western blot (1: 500approx. 1: 1000). Other applications not tested. Optimal dilutions are dependent on conditions and should be determined by the user.
Restrictions:	For Research Use only

## Handling

---

Concentration:	1.0 mg/mL
Buffer:	PBS (without Mg <sup>2+</sup> and Ca <sup>2+</sup> ), pH 7.4, 150 mM NaCl, 0.02 % Sodium Azide and 50 % Glycerol.
Preservative:	Sodium azide
Precaution of Use:	This product contains sodium azide: a POISONOUS AND HAZARDOUS SUBSTANCE which should be handled by trained staff only.
Handling Advice:	Avoid repeated freezing and thawing.
Storage:	-20 °C
Storage Comment:	Store the antibody (in aliquots) at -20 °C.

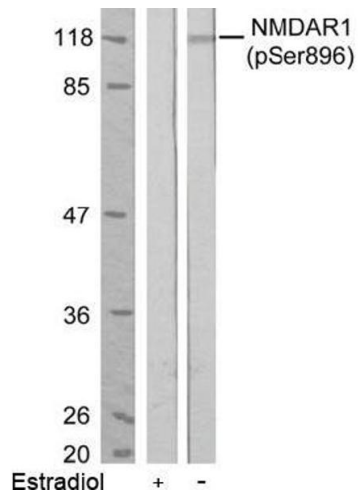


Image 1.