



[Go to Product page](#)

Datasheet for ABIN1967964

anti-PLG antibody

2 Images

Overview

Quantity:	200 µg
Target:	PLG
Reactivity:	Human, Mouse, Rat
Host:	Sheep
Clonality:	Polyclonal
Conjugate:	This PLG antibody is un-conjugated
Application:	Western Blotting (WB), ELISA, Immunohistochemistry (IHC), Immunohistochemistry (Paraffin-embedded Sections) (IHC (p))

Product Details

Brand:	IHC-plus™
Immunogen:	Purified mouse plasminogen.
Specificity:	Mouse Plasminogen. Cross reactivity: Human, Rat.
Purification:	Ion exchange chromatography

Target Details

Target:	PLG
Alternative Name:	PLG / Plasmin / Plasminogen (PLG Products)
Background:	Name/Gene ID: PLG Subfamily: Serine S1 Family: Protease

Target Details

Synonyms: PLG, Plasmin, Plasminogen

Gene ID: 5340

Pathways: [Complement System](#), [Lipid Metabolism](#)

Application Details

Application Notes: Approved: ELISA (10 µg/mL), IHC, IHC-P (5 µg/mL), WB (10 µg/mL)

Comment: Target Species of Antibody: Mouse

Restrictions: For Research Use only

Handling

Format: Liquid

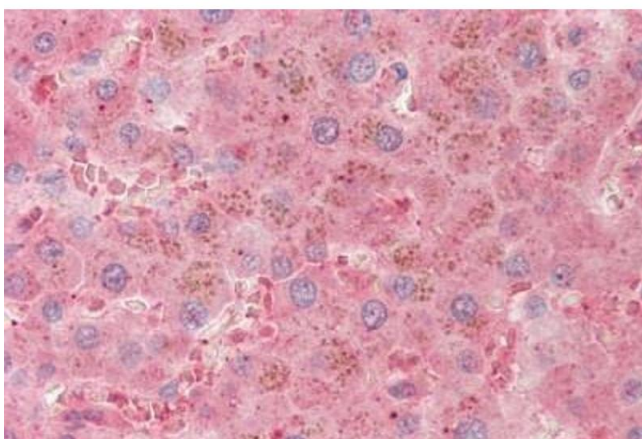
Concentration: Lot specific

Buffer: 50 % glycerol/H₂O (vol/vol)

Storage: -20 °C

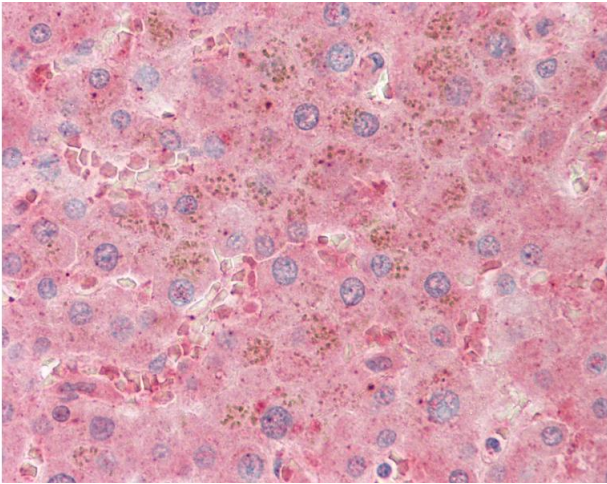
Storage Comment: Store at -20°C.

Images



Immunohistochemistry

Image 1. Human Liver: Formalin-Fixed, Paraffin-Embedded (FFPE)



Immunohistochemistry

Image 2. Anti-PLG / Plasmin / Plasminogen antibody IHC staining of human liver. Immunohistochemistry of formalin-fixed, paraffin-embedded tissue after heat-induced antigen retrieval. Antibody concentration 5 ug/ml.