



[Go to Product page](#)

Datasheet for ABIN1967976

anti-F2RL2 antibody

1 Image

Overview

Quantity:	0.5 mg
Target:	F2RL2
Reactivity:	Human, Mouse, Rat
Host:	Sheep
Clonality:	Polyclonal
Conjugate:	This F2RL2 antibody is un-conjugated
Application:	Western Blotting (WB), ELISA, Immunohistochemistry (IHC), Immunohistochemistry (Paraffin-embedded Sections) (IHC (p))

Product Details

Brand:	IHC-plus™
Immunogen:	Purified mouse prothrombin.
Isotype:	IgG
Specificity:	Recognizes mouse Prothrombin. Species cross-reactivity: human, rat.
Purification:	Purified

Target Details

Target:	F2RL2
Alternative Name:	F2 / Prothrombin / Thrombin (F2RL2 Products)
Background:	Name/Gene ID: F2

Target Details

Subfamily: Serine S1

Family: Protease

Synonyms: F2, Prothrombin B-chain, Coagulation factor II, FACTOR II, Prothrombin, PT, RPRGL2, Serine protease, THPH1, Thrombin

Gene ID: 2147

Pathways: [Cell-Cell Junction Organization](#), [Regulation of G-Protein Coupled Receptor Protein Signaling](#)

Application Details

Application Notes: Approved: ELISA (10 µg/mL), IHC, IHC-P (5 µg/mL), WB (10 µg/mL)

Usage: Suitable for use in ELISA and Western Blot. ELISA: 10 µg/mL. Western Blot: 10 µg/mL.

Comment: Target Species of Antibody: Mouse

Restrictions: For Research Use only

Handling

Format: Liquid

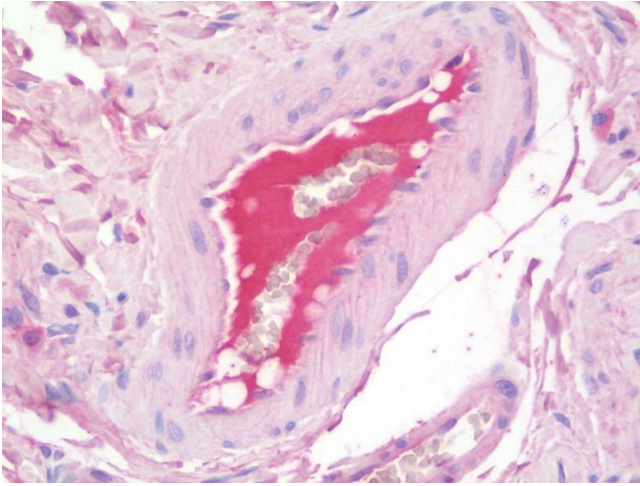
Concentration: Lot specific

Buffer: 50 % glycerol

Handling Advice: Aliquot to avoid repeated freezing and thawing.

Storage: 4 °C, -20 °C

Storage Comment: May be stored at 4°C for short-term only. Aliquot to avoid freeze-thaw cycles. Store at -20°C. Aliquots are stable for at least 1 year.



Immunohistochemistry

Image 1. Anti-F2 / Prothrombin / Thrombin antibody IHC staining of human blood plasma. Immunohistochemistry of formalin-fixed, paraffin-embedded tissue after heat-induced antigen retrieval. Antibody concentration 5 ug/ml.