

Datasheet for ABIN197200  
**anti-Nibrin antibody (Ser343)**



[Go to Product page](#)

2 Images

## Overview

Quantity:	0.1 mL
Target:	Nibrin (NBN)
Binding Specificity:	Ser343
Reactivity:	Human
Host:	Rabbit
Clonality:	Polyclonal
Conjugate:	This Nibrin antibody is un-conjugated
Application:	Western Blotting (WB)

## Product Details

Immunogen:	The antiserum was produced against synthesized non-phosphopeptide derived from human p95/NBS1 around the phosphorylation site of Serine 343 (S-L-SP-Q-G).
Specificity:	This antibody detects endogenous levels of total p95/NBS1 protein.
Purification:	Affinity Chromatography using epitope-specific immunogen.

## Target Details

Target:	Nibrin (NBN)
Alternative Name:	Nibrin ( <a href="#">NBN Products</a> )
Background:	The p95 gene (also known as NBS1 and Nibrin) is a member of the hMre11/hRad50 double-strand break complex (MRN complex). This protein complex has been implicated in Nijmegen breakage syndrome, an autosomal recessive disorder marked by increased cancer incidence,

## Target Details

cell cycle checkpoint deficits, and ionizing radiation sensitivity, thus revealing a direct molecular link between double-strand break repair and cell cycle checkpoint functions. In case of infection by adenovirus E4, the MRN complex is inactivated and degraded by viral oncoproteins, thereby preventing concatenation of viral genomes in infected cells. NBS1 is expressed ubiquitously and presents high levels in testis. Synonyms: Cell cycle regulatory protein p95, NBN, NBS, NBS1, Nijmegen breakage syndrome protein 1, P95

Gene ID: 4683

NCBI Accession: [NP\\_002476](#)

UniProt: [O60934](#)

Pathways: [DNA Damage Repair](#), [Production of Molecular Mediator of Immune Response](#)

## Application Details

Application Notes: Western Blot: 1/100approx. 1/500. Immunohistochemistry: 1/50approx. 1/100.  
Other applications not tested.  
Optimal dilutions are dependent on conditions and should be determined by the user.

Restrictions: For Research Use only

## Handling

Concentration: 1.0 mg/mL

Buffer: PBS (without Mg<sup>2+</sup> and Ca<sup>2+</sup>), pH 7.4 containing 150 mM NaCl, 0.02 % Sodium Azide and 50 % Glycerol.

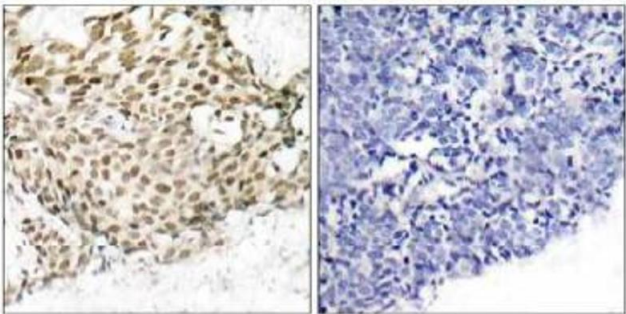
Preservative: Sodium azide

Precaution of Use: This product contains sodium azide: a POISONOUS AND HAZARDOUS SUBSTANCE which should be handled by trained staff only.

Handling Advice: Avoid repeated freezing and thawing.

Storage: -20 °C

Storage Comment: Store the antibody (in aliquots) at -20 °C.



Peptide - +

Image 1.

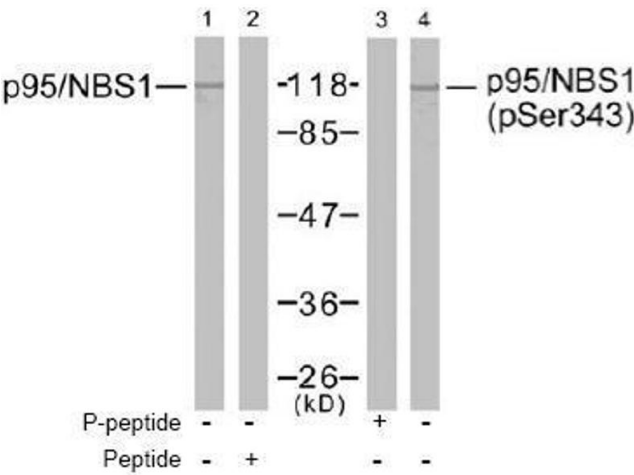


Image 2.