

Datasheet for ABIN197312
anti-PKC mu antibody (Ser738)



[Go to Product page](#)

2 Images

Overview

Quantity:	0.1 mL
Target:	PKC mu (PRKD1)
Binding Specificity:	Ser738
Reactivity:	Human, Mouse, Rat
Host:	Rabbit
Clonality:	Polyclonal
Conjugate:	This PKC mu antibody is un-conjugated
Application:	Western Blotting (WB), Immunofluorescence (IF)

Product Details

Immunogen:	The antiserum was produced against synthesized non-phosphopeptide derived from human PKD/PKCmy around the phosphorylation site of serine 738 (E-K-Sp-F-R).
Specificity:	This antibody detects endogenous levels of total PKD/PKC μ protein.
Purification:	Immunoaffinity Chromatography using epitope-specific immunogen.

Target Details

Target:	PKC mu (PRKD1)
Alternative Name:	PRKD1 (PRKD1 Products)
Background:	Protein Kinase C mu, is a ~140 kDa member of the novel group (nPKCs: sensitive to diacylglycerol, phosphatidylserine, and phorbol esters) of the PKC family of serine/threonine kinases that are involved in a wide range of physiological processes including mitogenesis, cell

Target Details

survival, metastasis and transcriptional regulation. PKC mu (also known as Protein Kinase D or PKD) is implicated in the regulation of multiple cellular processes including Golgi organization and membrane transport in epithelial cells. PKC mu is phosphorylated on serine 742 (serine 748 for the mouse sequence) in the activation loop in a PKC-dependent pathway, mainly by PKC eta and PKC epsilon. This is critical for its catalytic activity, substrate phosphorylation and role in activating the ERK1 MAP Kinase signaling cascade. Synonyms: PKC D1, PKC mu, PKD, PKD1, PRKCM, Protein kinase C mu type, Protein kinase D, Serine/threonine-protein kinase D1, nPKC-D1, nPKC-mu

Gene ID: 5587

NCBI Accession: [NP_002733](#)

UniProt: [Q15139](#)

Pathways: [Myometrial Relaxation and Contraction](#)

Application Details

Application Notes: Western blot: 1/500-1/1000. Immunofluorescence: 1/100-1/200.
Other applications not tested.
Optimal dilutions are dependent on conditions and should be determined by the user.

Restrictions: For Research Use only

Handling

Concentration: 1.0 mg/mL

Buffer: PBS (without Mg²⁺ and Ca²⁺), pH 7.4, 150 mM NaCl, 0.02 % Sodium Azide and 50 % Glycerol.

Preservative: Sodium azide

Precaution of Use: This product contains sodium azide: a POISONOUS AND HAZARDOUS SUBSTANCE which should be handled by trained staff only.

Handling Advice: Avoid repeated freezing and thawing.

Storage: -20 °C

Storage Comment: Store the antibody (in aliquots) at -20 °C.

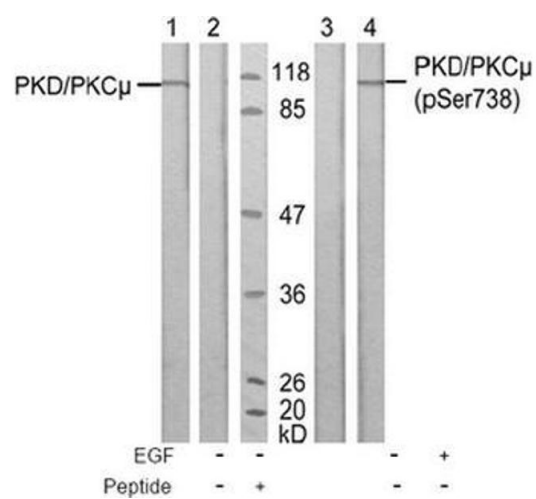


Image 1.

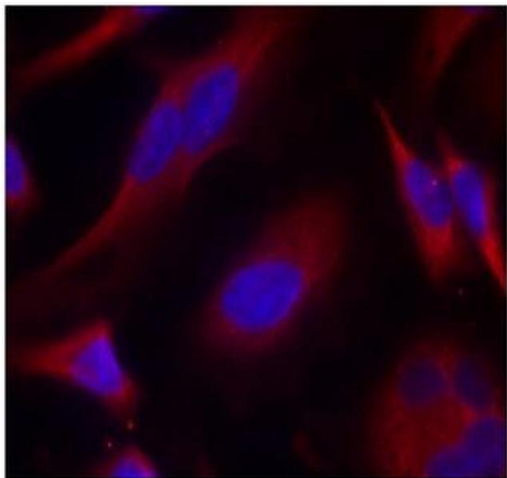


Image 2.