

Datasheet for ABIN197326

anti-ASK1 antibody (Ser966)

3 Images

[Go to Product page](#)

Overview

Quantity:	0.1 mL
Target:	ASK1 (MAP3K5)
Binding Specificity:	Ser966
Reactivity:	Human, Mouse
Host:	Rabbit
Clonality:	Polyclonal
Conjugate:	This ASK1 antibody is un-conjugated
Application:	Western Blotting (WB), Immunohistochemistry (Paraffin-embedded Sections) (IHC (p)), Immunofluorescence (IF)

Product Details

Immunogen:	Synthetic non-phosphopeptide derived from Human ASK1 around the phosphorylation site of Serine 966 (S-I-Sp-L-P).
Specificity:	This antibody detects endogenous levels of total ASK1 protein.
Purification:	Affinity chromatography

Target Details

Target:	ASK1 (MAP3K5)
Alternative Name:	MEKK5 / ASK1 (MAP3K5 Products)
Background:	Mitogen activated protein (MAP) kinase cascades are activated in response to various extracellular stimuli including cytokines, growth factors and environmental stresses. A novel

Target Details

MAP kinase kinase kinase (MAPKKK) was recently identified and designated ASK1 (for apoptosis signal-regulating kinase 1). ASK1 activates two different subgroups of MAPKK, MKK4 and MKK6, which in turn activate c-Jun N terminal kinase (JNK) and p38 MAP kinase, respectively. ASK1 is activated by TNFR and Fas through the interaction with members of the TRAF family and Fas associated protein Daxx. Overexpression of ASK1 induces apoptotic cell death, and a catalytically inactive form of ASK1 inhibits TNF alpha-induced apoptosis. ASK1 is expressed in variety of human and mouse tissues. Synonyms: Apoptosis signal-regulating kinase 1, MAP3K5, MAPK/ERK kinase kinase 5, MAPKKK5, Mitogen-activated protein kinase kinase kinase 5

Gene ID: 4217

NCBI Accession: [NP_005914](#)

UniProt: [Q99683](#)

Pathways: [MAPK Signaling](#), [Positive Regulation of Endopeptidase Activity](#), [Unfolded Protein Response](#)

Application Details

Application Notes: Immunofluorescence: 1/100-1/200. Immunohistochemistry on Paraffin-Embedded Sections: 1/50-1/100.
Other applications not tested.
Optimal dilutions are dependent on conditions and should be determined by the user.

Restrictions: For Research Use only

Handling

Concentration: 1.0 mg/mL

Buffer: PBS (without Mg²⁺ and Ca²⁺), pH 7.4, 150 mM NaCl, 0.02 % Sodium Azide and 50 % Glycerol.

Preservative: Sodium azide

Precaution of Use: This product contains sodium azide: a POISONOUS AND HAZARDOUS SUBSTANCE which should be handled by trained staff only.

Handling Advice: Avoid repeated freezing and thawing.

Storage: -20 °C

Storage Comment: Store the antibody (in aliquots) at -20 °C.

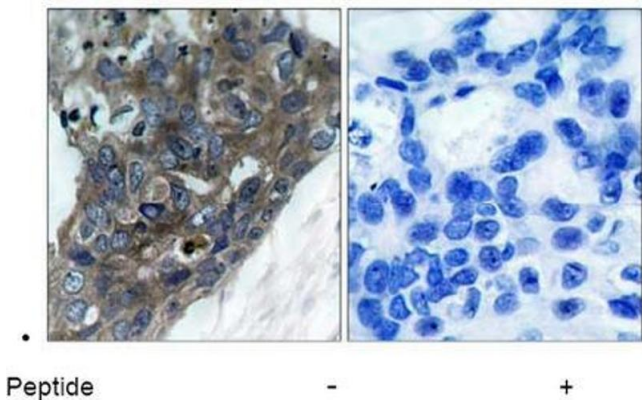


Image 1.

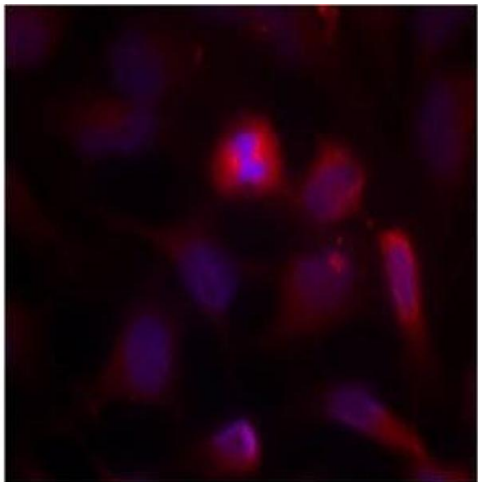


Image 2.

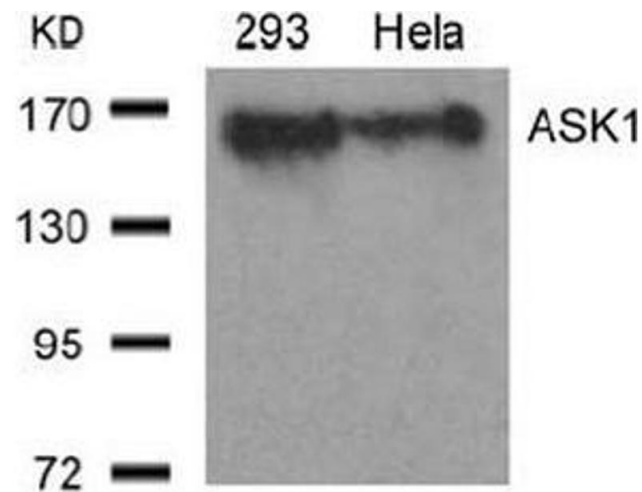


Image 3.